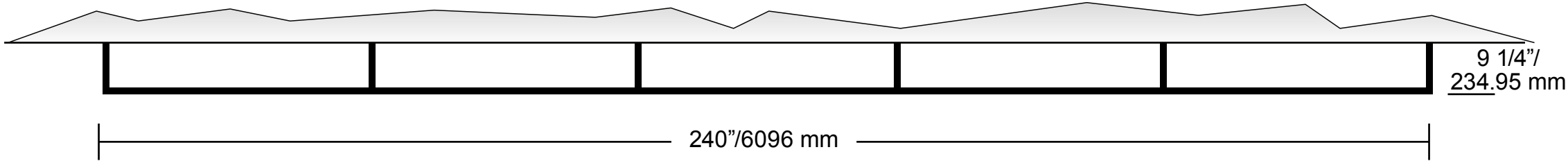


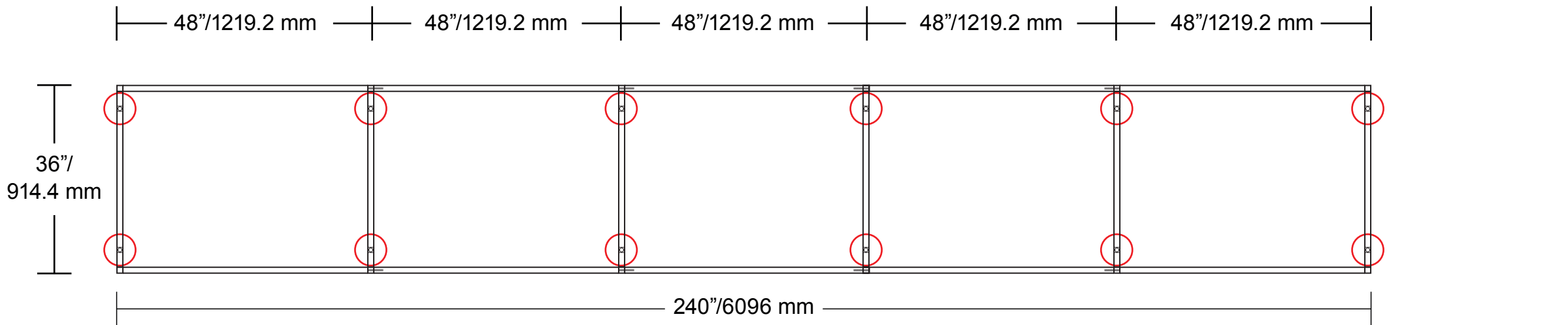
# FSC Horizontal Light Box



1 ELEVATION VIEW  
01.00 SCALE: 1/2" = 1'-0"

- All-aluminum construction with powder-coated, matte black finish and lighted bottom rails via UL certified, dimmable low voltage, white (3500K) LEDs
- For stores with smaller footprint, end modules reduced in size as necessary
- Assembled dimensions: 240"/6096 mm Wide x 18 5/8"/473.075 mm High x 36"/914.4 mm Deep
- **Note: It is the sole responsibility of the GC/Installer to use anchors appropriate to conditions on site.**

# FSC Horizontal Light Box

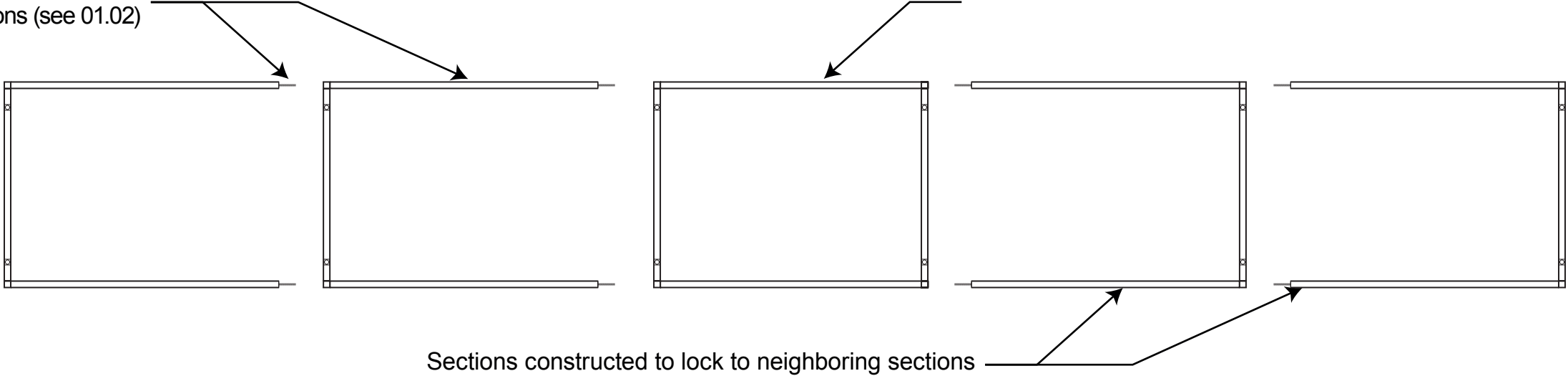


1 PLAN VIEW:  
ASSEMBLED FRAME  
01.01 SCALE: 1/2" = 1'-0"

○ Indicates location of exposed threaded rod (see 01.02)

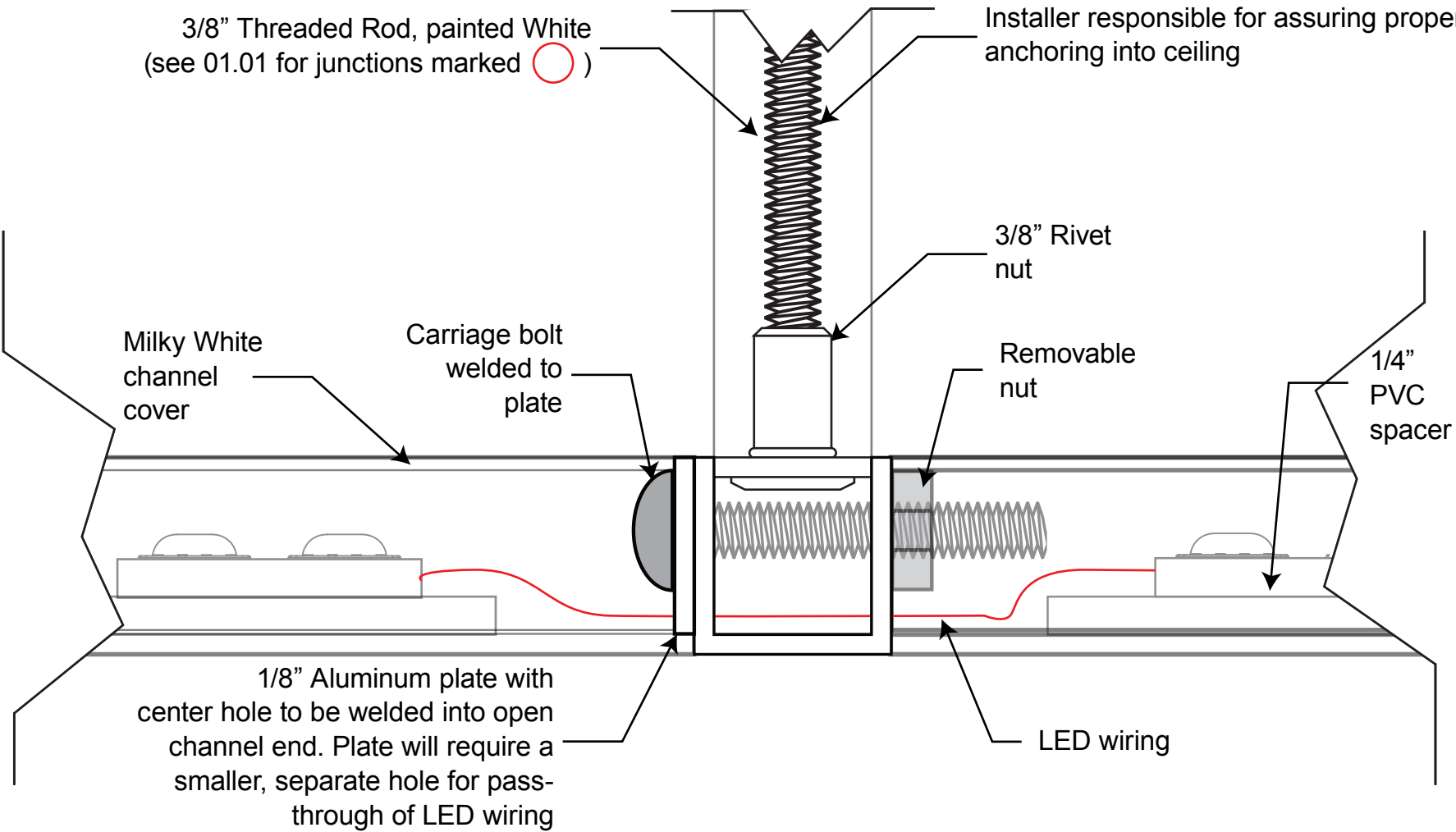
Sections constructed to lock to neighboring sections (see 01.02)

Center section *only* is constructed closed on both edges

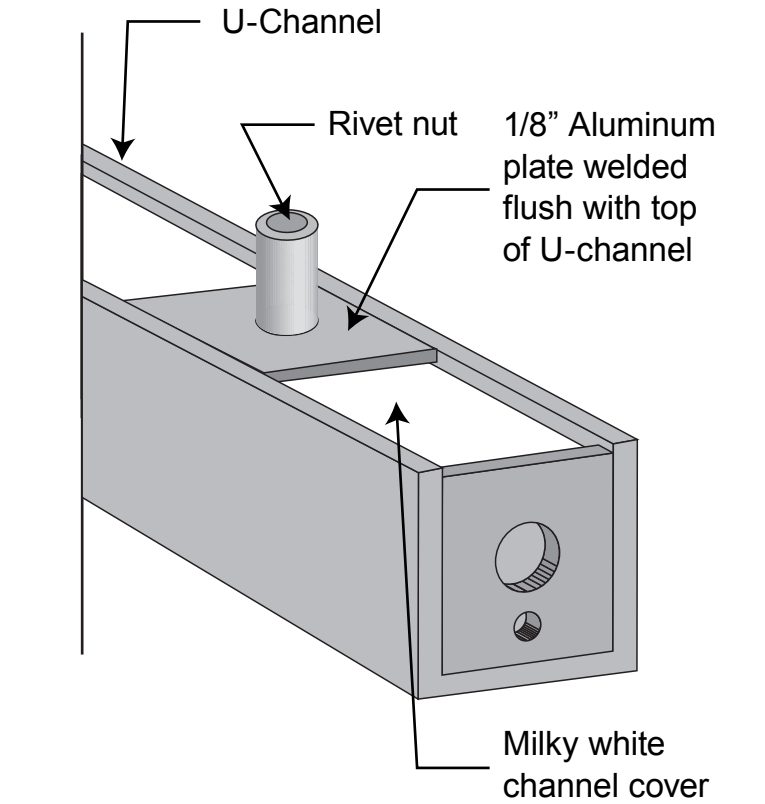


2 PLAN VIEW: FRAME  
SECTIONS  
01.01 SCALE: 1/2" = 1'-0"

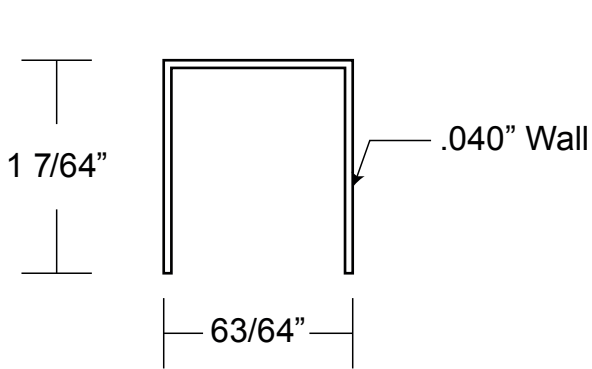
# FSC Horizontal Light Box: Typical Conntections/Threaded Rod



1 ELEVATION CUTAWAY  
01.02 SCALE: 1'-0" = 1'-0"

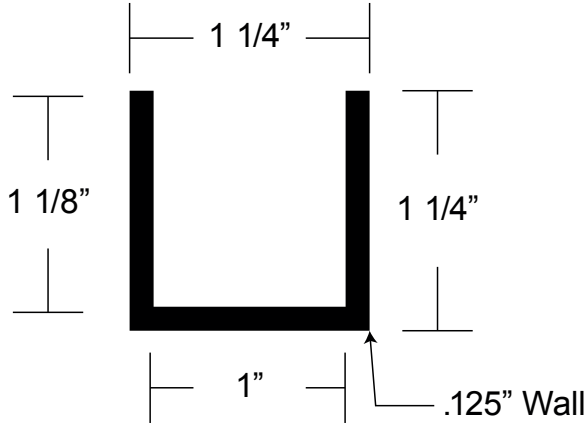


2 ISOMETRIC VIEW: CONNECTION POINT  
01.02 SCALE: N.T.S.

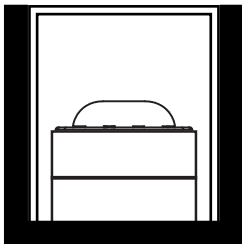


"Milky White" polycarbonate lens

3 END VIEW: EXTRUDED PLASTIC  
01.02 SCALE: 1'-0" = 1'-0"



4 END VIEW: AL CHANNEL UTILIZED  
01.02 SCALE: 1'-0" = 1'-0"



5 END VIEW: ASSEMBLED  
01.02 SCALE: 1'-0" = 1'-0"