

Cutting out Data without Register Marks (PC ORIGIN OFFSET)

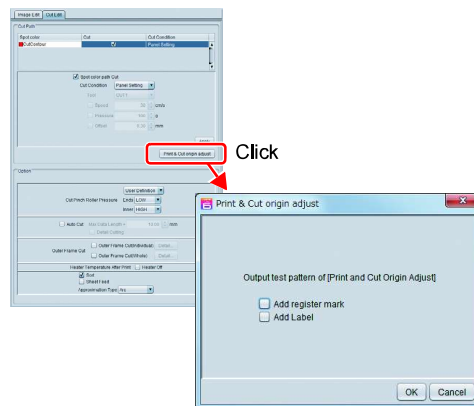
Adjust the misalignment between printing and cutting by Print & Cut.

Use the attached RIP software (RasterLink) for this adjustment.

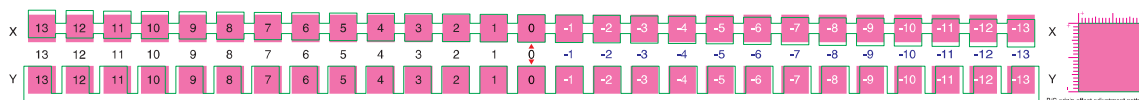
Print the adjustment pattern from RasterLink, and enter the adjustment values to the printer.

For Print & Cut without register marks

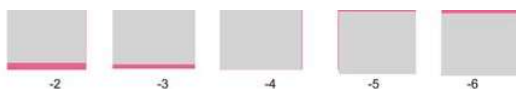
- 1 Set the machine to "REMOTE" status.
- 2 Set the print conditions (profile, cut conditions) of the job that you want to print using RasterLink.
- 3 Click [print & cut Origin adjust] in the [Cut edit] tab of RasterLink.
 - Click [OK] to print the adjustment pattern.



- 4 When the pattern is printed, press **[FUNC1]** (ADJUST) and select "PC ORIGIN OFFSET".
 - When the media is fed, peel the cut part of the pattern, and check the adjustment values



X enlarged



Enter the value of the position that has the least misalignment between top and bottom. The example here shows that -4 has the least misalignment, so enter "-4".

Y enlarged



Enter the value of the position that has the least misalignment between right and left. The example here shows that 2 has the least misalignment, so enter "2".

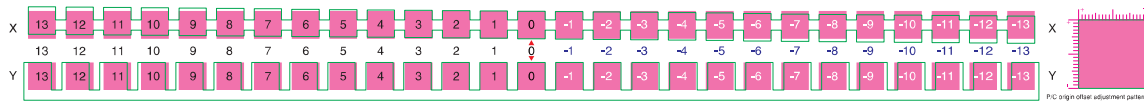
- 5 Enter the adjustment values
 - When you press the [ENTER] key, the media return, and the operation is completed.

Important!

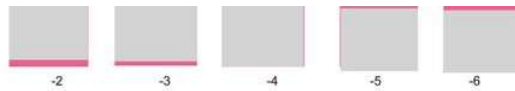
- When printing the data that has a different resolution (Y), make adjustment again. (Save an adjustment value per resolution)
- You cannot print adjustment patterns with multiple conditions continuously, and enter the adjustment values. Make sure you print and set one adjustment value per condition.

For Print & Cut with register marks

- 1 Set the machine to "REMOTE" status.
- 2 Set the print conditions (profile, cut conditions) of the job that you want to print using RasterLink.
- 3 Click [print & cut Origin adjust] in the [Cut edit] tab of RasterLink.
- 4 Select "Add register mark".
 - Click [OK] to print the adjustment pattern.
- 5 When the pattern is printed, press **FUNC1** (ADJUST) and select "TP OFFSET".
 - When the media is fed, peel the cut part of the pattern, and check the adjustment values (The actual pattern has register marks.)

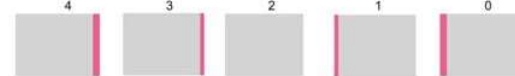


X enlarged



Enter the value of the position that has the least misalignment between top and bottom
The example here shows that -4 has the least misalignment, so enter "-0.40".

Y enlarged



Enter the value of the position that has the least misalignment between right and left
The example here shows that 2 has the least misalignment, so enter "0.20".

- 6 Enter the adjustment values
 - When you press the [ENTER] key, the media return, and the operation is completed.

Setting the Scale Adjust

When printing and cutting without register marks, adjustment is performed if the misalignment in the scanning direction occurs between the left and right edges of the media.

When you perform scale adjustment, adjustment is performed automatically.

- 1 Set a media (P.2-4)
 - Set the sheet to print the register mark.
- 2 Press the **FUNC1** (MENU) ➔ **FUNC3** (>>) ➔ **ENTER** keys
 - Cutting menu is displayed.
- 3 Press **FUNC3** (<<)
- 4 Press **▲▼** to select "MAINTENANCE", and press the [ENTER] key
- 5 Press **▲▼** to select "SCALE ADJUST", and press the **ENTER** key
- 6 Press the **ENTER** key on the confirmation screen
 - A correction pattern is printed and correction is performed.
- 7 Press the **END/POWER** key several times to end the setting