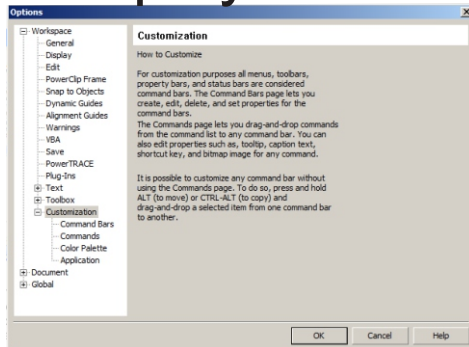
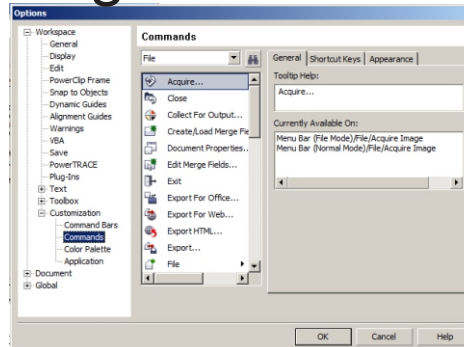


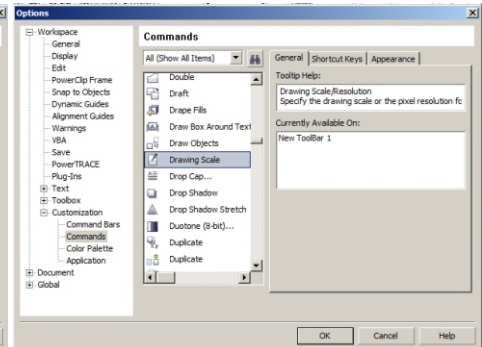
# Display the Drawing Scale Tool in CorelDRAW



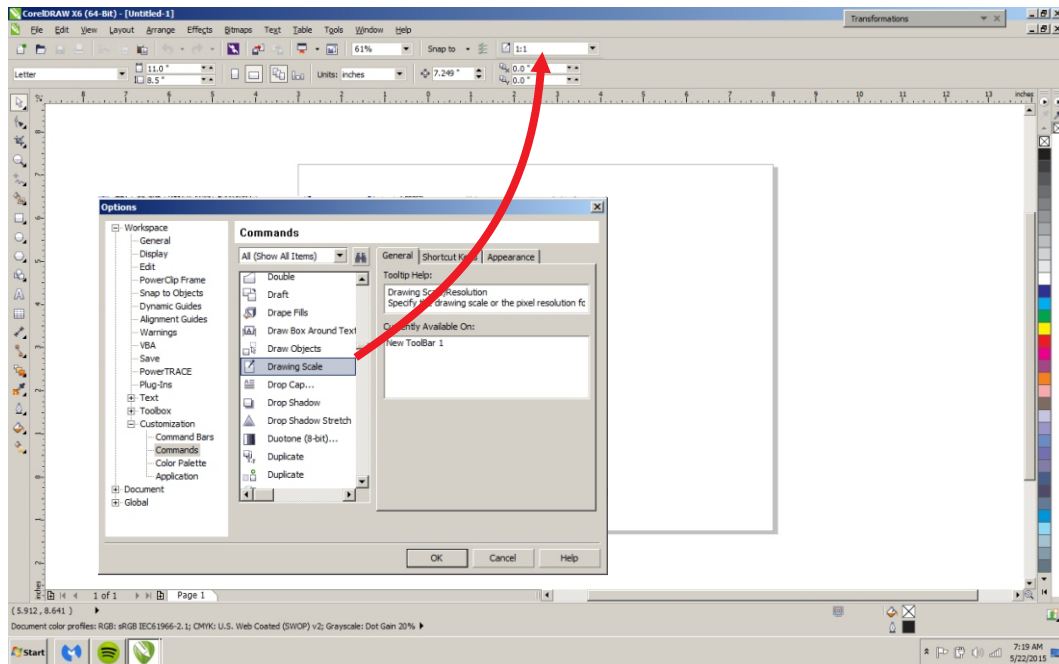
Pull Down Tools>Customization



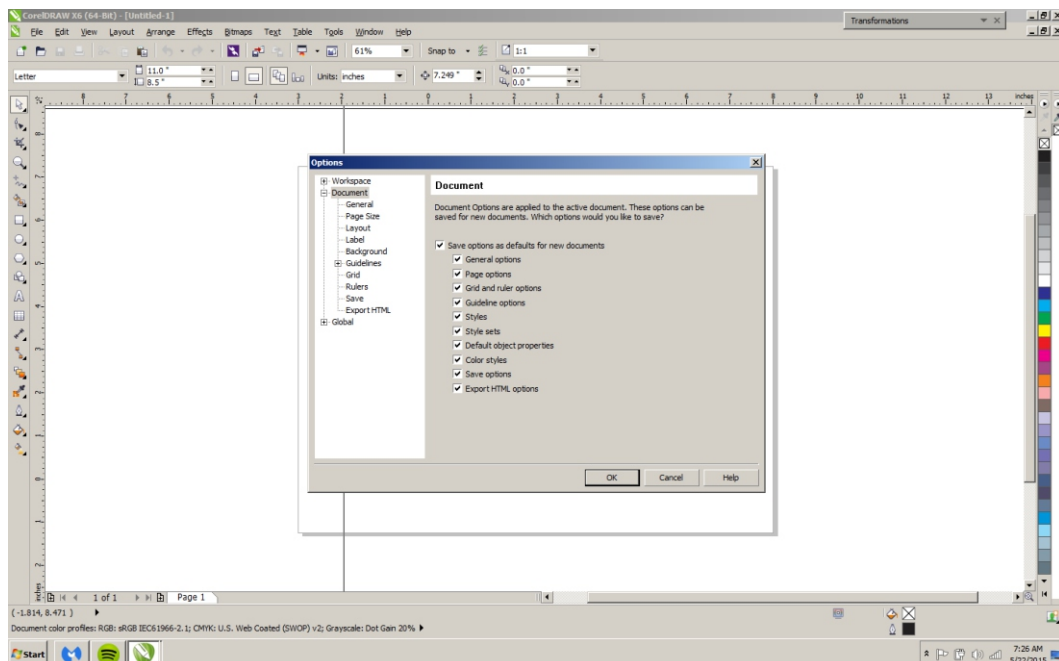
Expand Workspace to > Customization > Commands



On Commands pull down "File" to "All (Show All Items)"  
Drag the bar down to Drawing Scale



Using the left mouse button, click and hold while dragging the Drawing Scale icon to a blank part of your toolbar



Pull down Tools>Options>Document. Check the "Save options for defaults for new documents" box the Drawing Scale becomes a permanently displayed tool in CorelDraw, To change scale, simply click on the down arrow and choose the scale you want.