



## Steps to replace the adapter

**Note:** Avoid to hurt the print head during the replacement

1. prepare the screwdriver



2. Screw down the 3 screw on the printhead





[www.Sign-in-China.com](http://www.Sign-in-China.com)

Online Shopping for AD & Signage Products





3. take off the metal jump ring





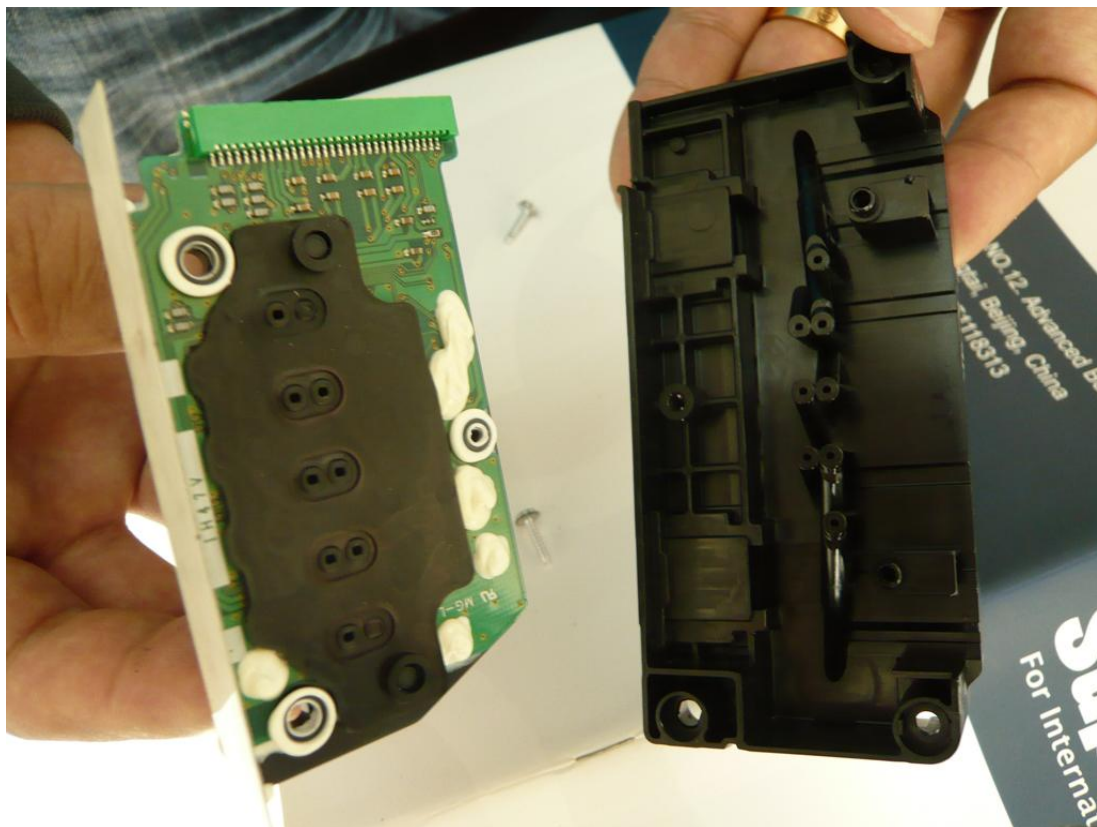
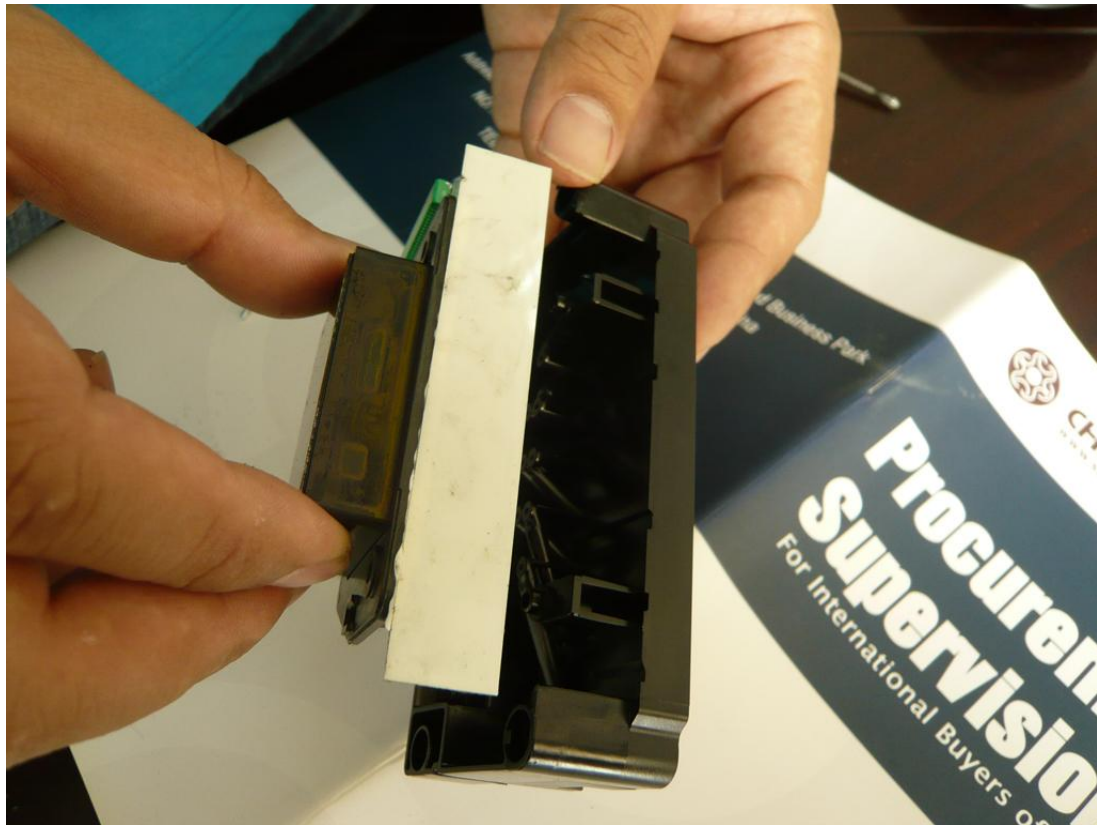


4. tear off the sticker





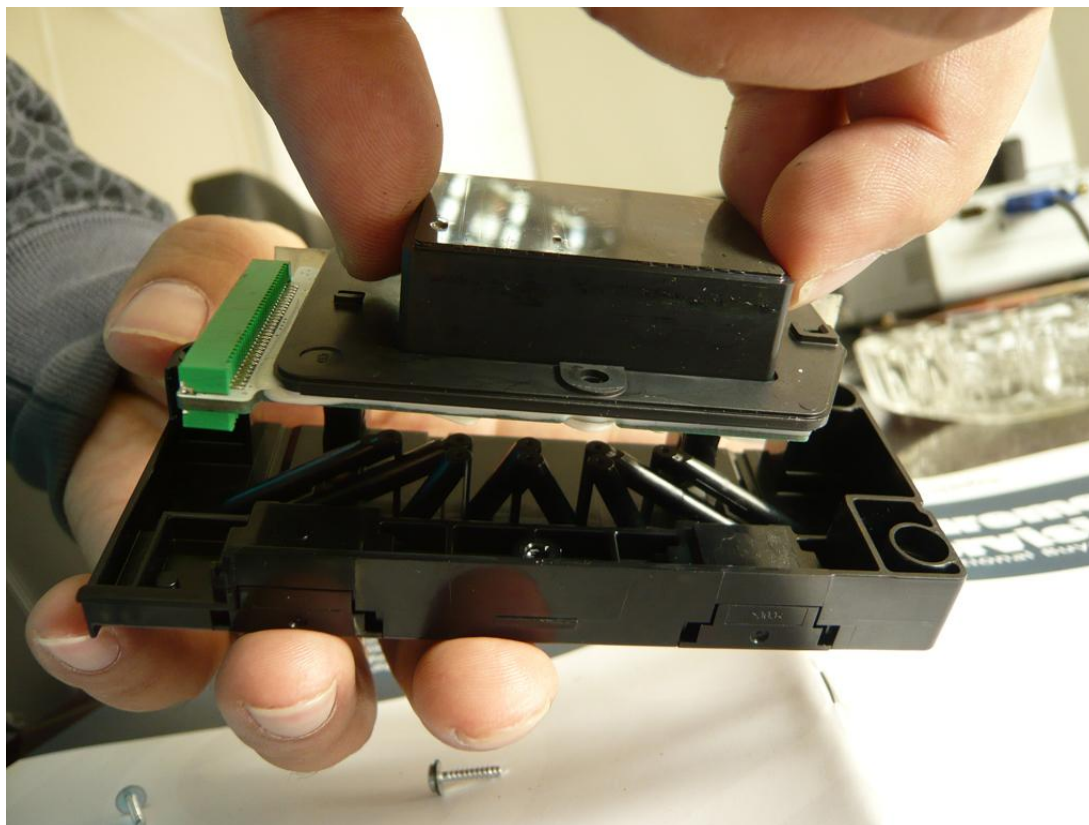
5. separate the printhead and the adapter







6. align the printhead with the new adapter and install



7. compaction and stick the sticker tight





8. install the jump ring



9. screw the 3 screws back and tight

