

H652 New UV Lamp Bulb Replacement Procedure

Description: New style UV Lamps in the H652 Printer are designed with bulb housings that are extruded rather than bent metal. This document describes how to replace bulbs for the newer UV Lamps. The procedure for changing bulbs in older lamps is provided in the existing H652 manuals.

Affected Printers: H652

H652 New UV Lamp Bulb Replacement Procedure

New style UV Lamps in the H652 Printer are designed with bulb housings that are extruded rather than bent metal.

This document describes how to replace bulbs for the newer UV Lamps. The procedure for changing bulbs in older lamps is provided in the existing H652 manuals.

Before Starting

Follow the instructions in this section prior to starting the procedure.

- For safety concerns, please read and understand the [EFI Ink Jet Printer Safety Guide](http://inkjet.support.efi.com/index.php) located at <http://inkjet.support.efi.com/index.php> prior to attempting any service work on your printer.
- Verify you have all the parts and software to complete this procedure.
- This procedure takes approximately "1/2" hour(s) to complete.

Required Tools, Materials and Documents

The following tools and materials are required to replace bulbs in the new lamps. For information regarding older lamp designs, see the H652 manual:

- Standard Field Service Tool Kit
- Latex, Nitrile, or an equivalent type of gloves (Cotton Gloves are Acceptable)
- Lint Free Wipes

Procedural Overview

The following provides an overview of the content of this Customer Advisory Bulletin (CAB).

[1.0 Bulb Replacement Preparation](#)

[1.1 Shroud Removal](#)

[1.2 Electrical Connections](#)

[1.3 Remove Lamp Module](#)

[1.4 Bulb Module Removal](#)

[1.5 Bulb Module Differences](#)

[2.0 Bulb Replacement](#)

1.0 Bulb Replacement Preparation

Prepare to replace bulbs as follows:

- Shutdown the printer following the normal shutdown procedure.
- Turn off main power breaker
- Clear a work surface and lay several lint-free wipes on the work surface.
- Check to ensure the UV bulbs have completely cooled.

1.1 Shroud Removal

Begin removal of carriage shroud by loosening four screws, two at each side of the shroud. Continue removal of the shroud by removing two screws from two locations inside the carriage shroud as shown below.

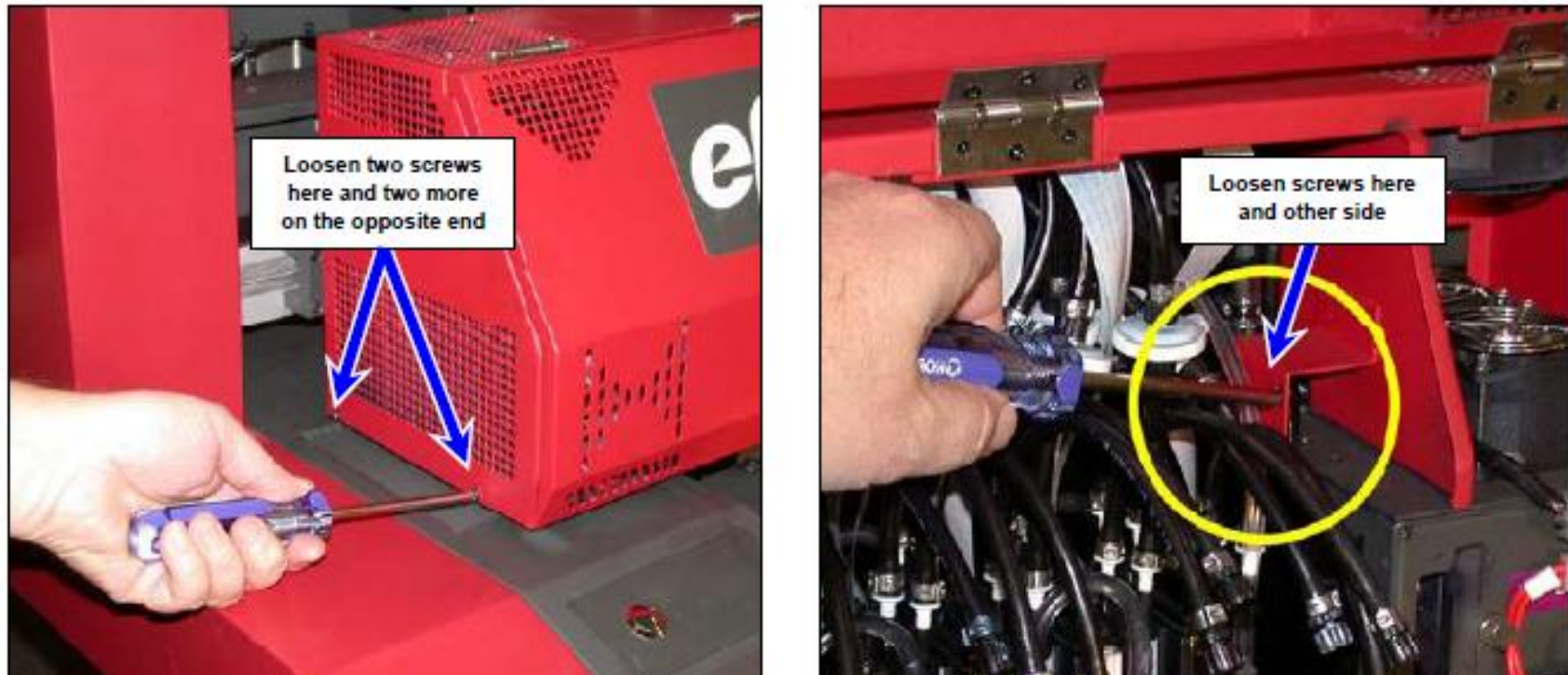


Figure 1: Carriage Shroud Removal

1.2 Electrical Connections

- Disconnect the cooling fan power connector in two places as shown.
- Disconnect the solenoid power connector.
- Disconnect the lamp power connector by turning the collar counter-clockwise then gently rock the connector from side to side to free it from its receptacle.

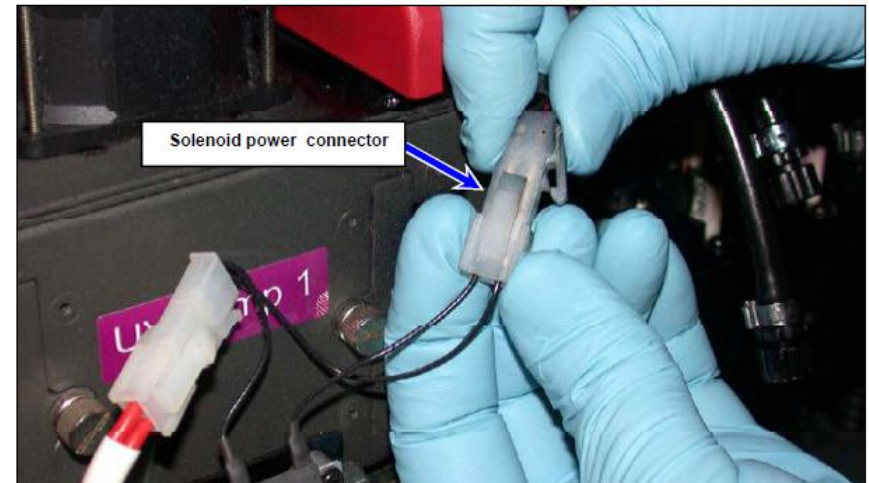


Figure 2: UV Lamp Power Connections

- Disconnect the cooling fan power connector in two places as shown.
- Disconnect the solenoid power connector.

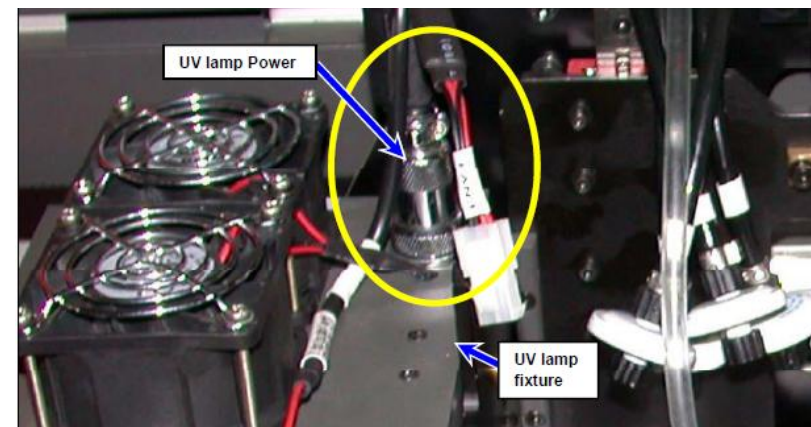


Figure 3: Cooling Fan Power Connections

1.3 Remove Lamp Module

- Loosen Lamp Module mounting screws.
- Pull lamp module forward and slightly to the left to release it from the mounting plate.

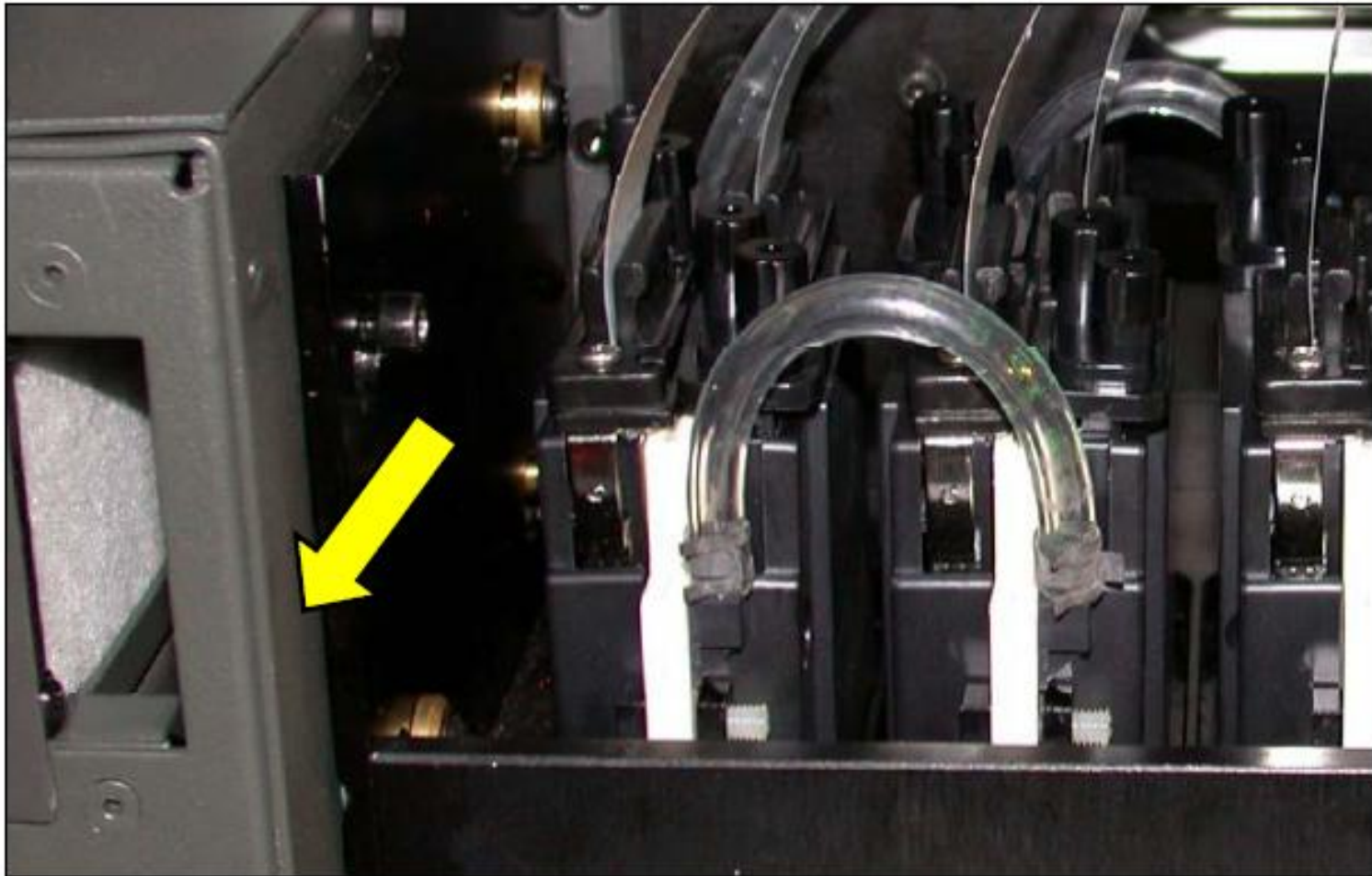


Figure 4: Lamp Module Removal

1.4 Bulb Module Removal

- Place lamp module on a clean work surface.
- Remove the 4 mounting screws.
- Pull the lamp fixture free and remove it from the Lamp Module.

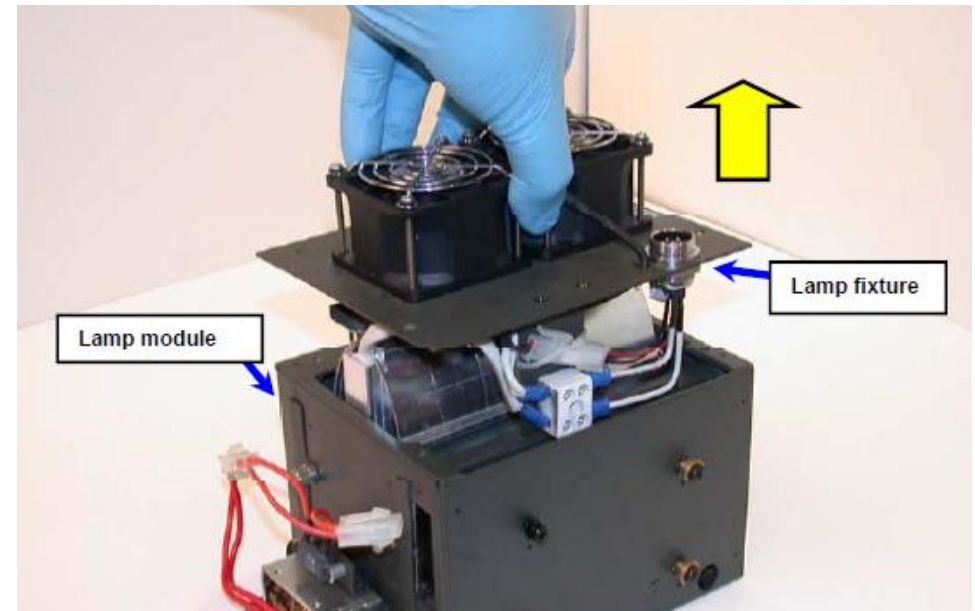
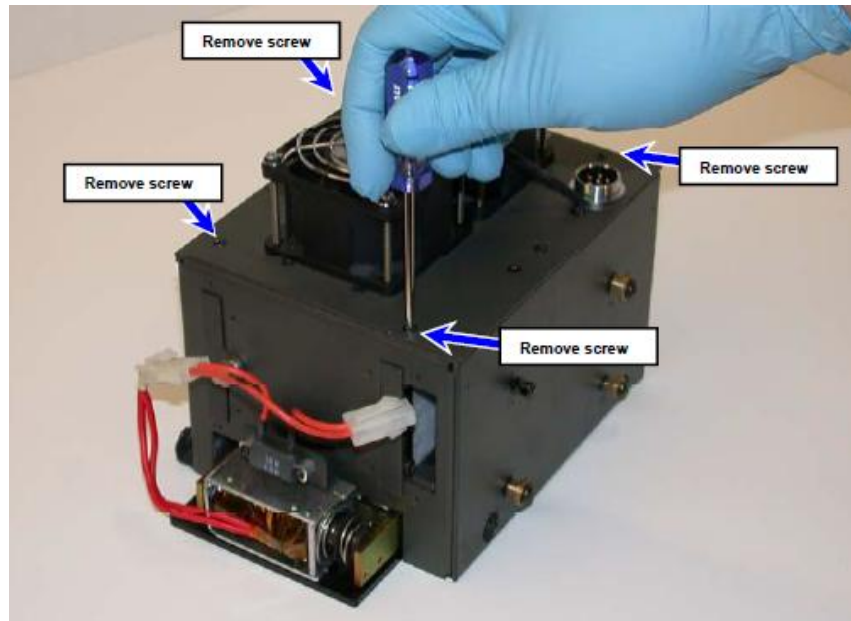
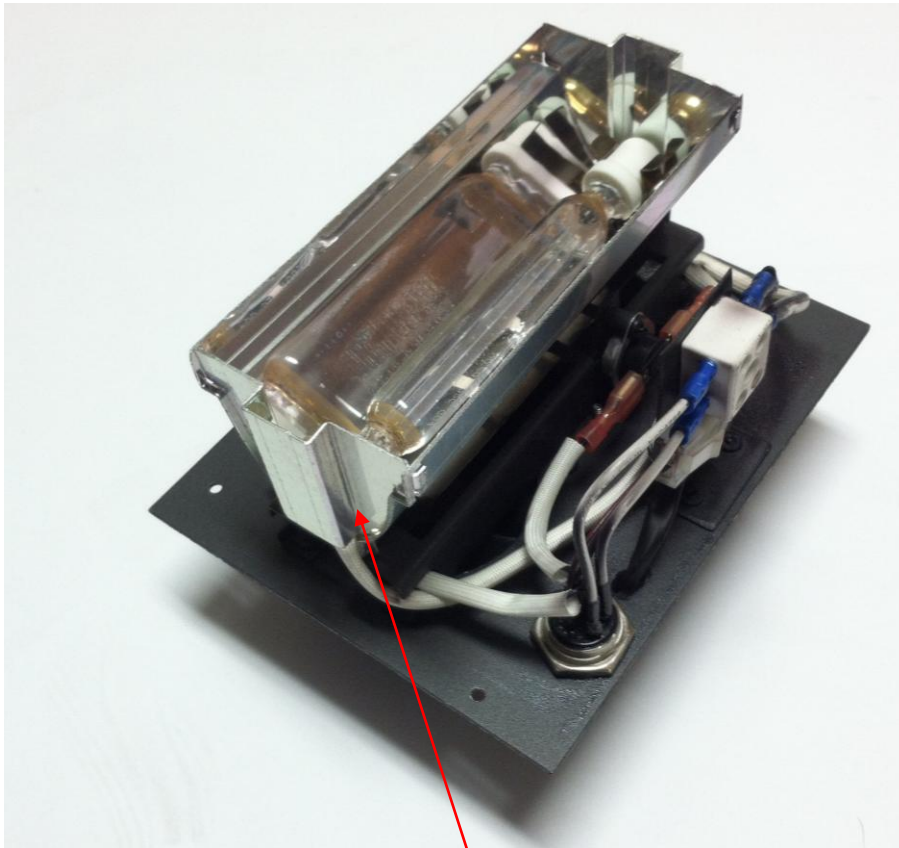


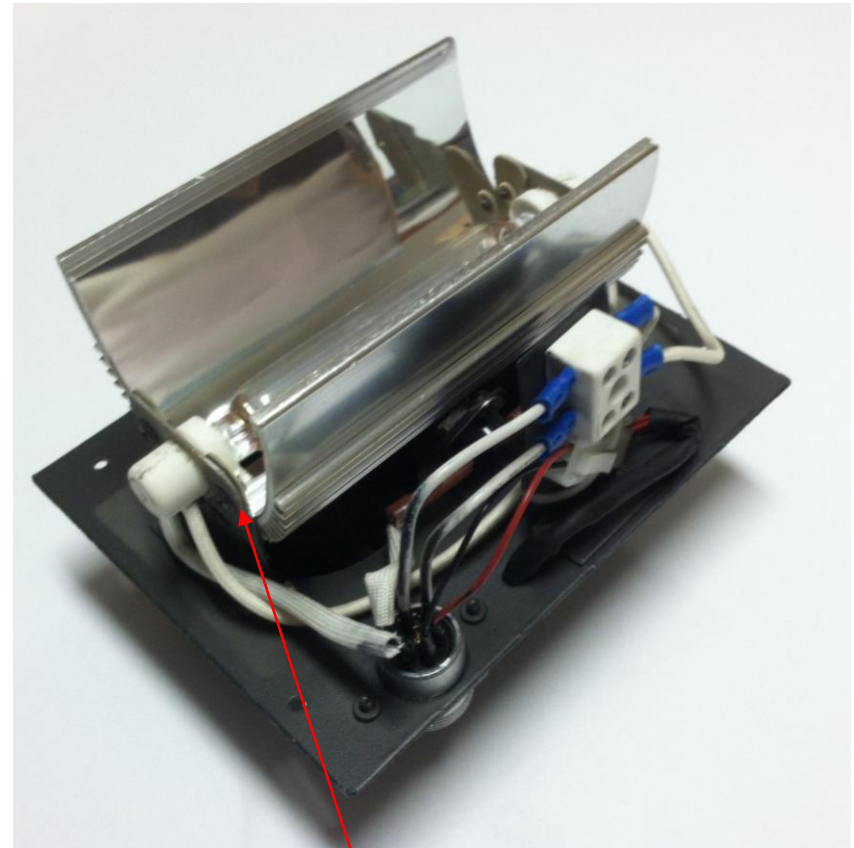
Figure 5: Lamp Module and Lamp Fixture Separation

1.5 Bulb Module Differences

The older version bulb module is shown on the left. New version shown on the right.



Old Version Bulb Retainer



New Version Bulb Retainer

Figure 6: Lamp Module Differences

2.0 Bulb Replacement

The new version bulb module has a retainer clip on both sides that is removed by loosening and removing the 2 screws on each side and lifting the retainer up, and away from the bulb.

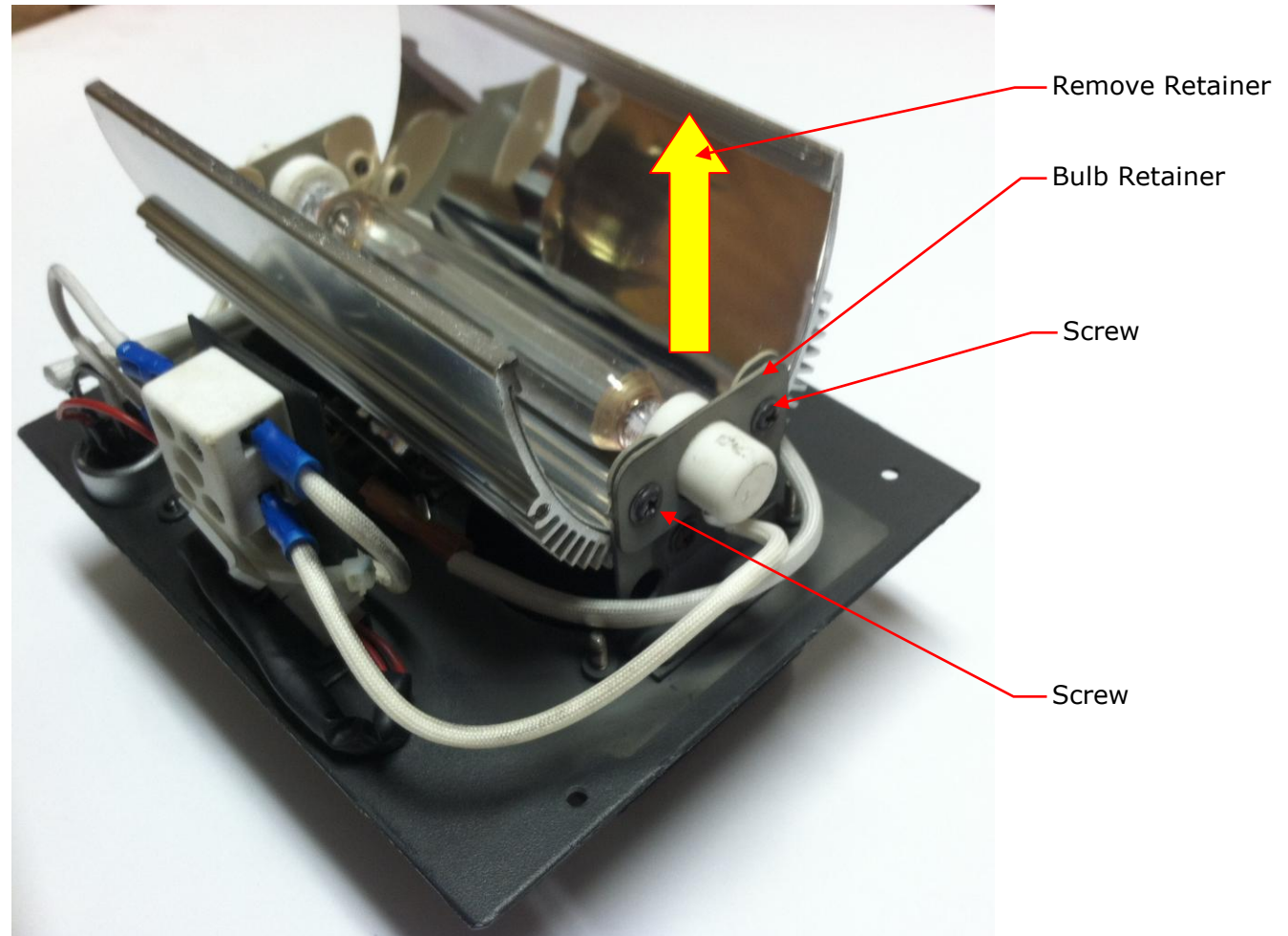


Figure 7: New Lamp Module Bulb Retainer

- With the retainer removed, disconnect the bulb wires from the terminal block, replace the bulb and reconnect the wires as before.
- Reinstall the retainer clip using the mounting screws.
- Reassemble the Lamp Module.
- Reinstall on printer.

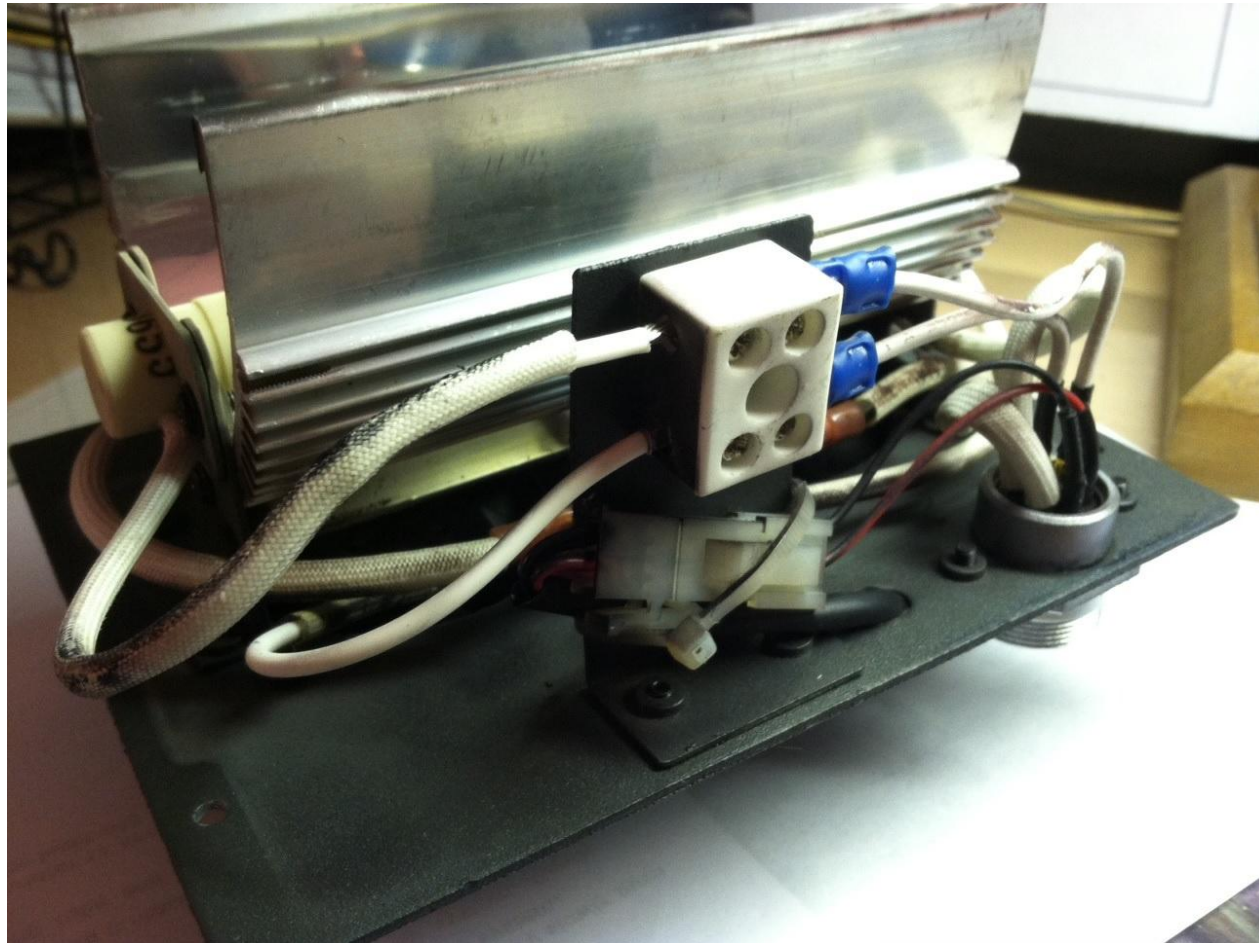


Figure 8: New Lamp Module Wire Connections