

How to Connect your SC-545EX to WIN 10 (Full Explanation)

Thursday, 21 January 2021

11:16 PM

Useful Link:

<https://www.rolanddga.com/support/products/print-printcut/soljet-pro-ii-sc-540ex-54-eco-solvent-inkjet-printer-cutter>

<http://download.rolanddg.jp/en/color.html#rvwlocalup>

<https://www.manualslib.com/manual/261063/Roland-Sc-545ex-PrintAndcut.html>

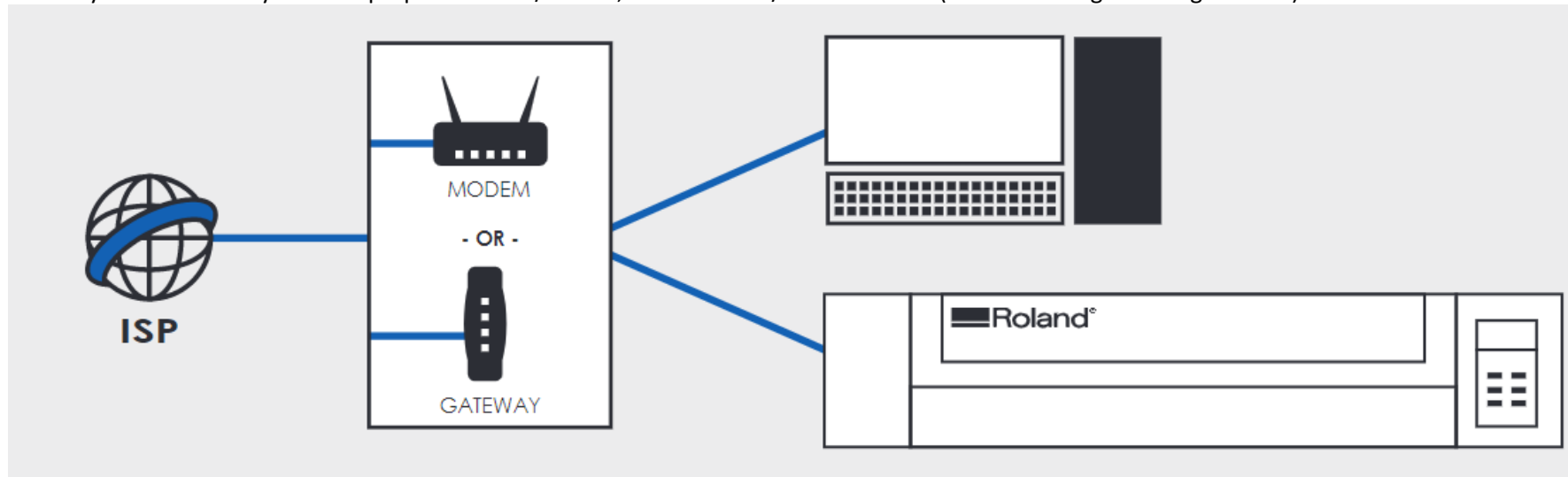
https://www.academia.edu/22961461/Roland_PrintServer_Network_Settings_Guide

What I had before I started all this:

- The Unit (SC-545EX)
- Laptop (HP Envy x360)
- Modem Router (Netgear)
- 2x10m LAN CAT 6 Cables
- 1 CD of Versaworks V1.0
- And a crap load of swearing!

Step One: Hard Connection:

The Way I Connected My Unit: Laptop to Modem/Router, Then Modem/Router to Unit (Via Lan - Straight through Cables)

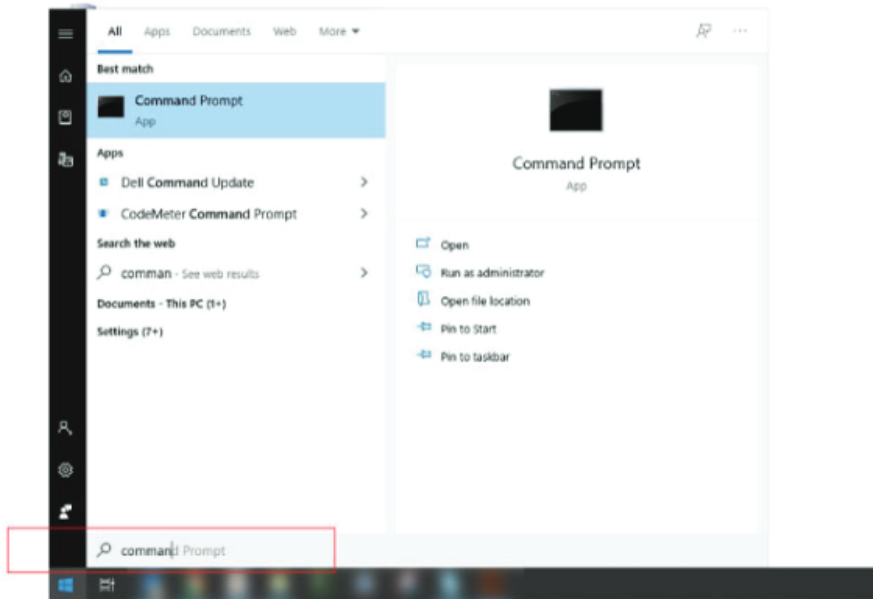


FYI: You will only require to turn on the main switch at the back and don't need to turn on the button on the front for all of this to work.

Step Two: Get Appropriate Information of Your PC:

B. Open Command Prompt application

Click the Start button on your PC, start typing “Command” and you should see the Command Prompt application appear.



You can also find the Command Prompt application in this folder:

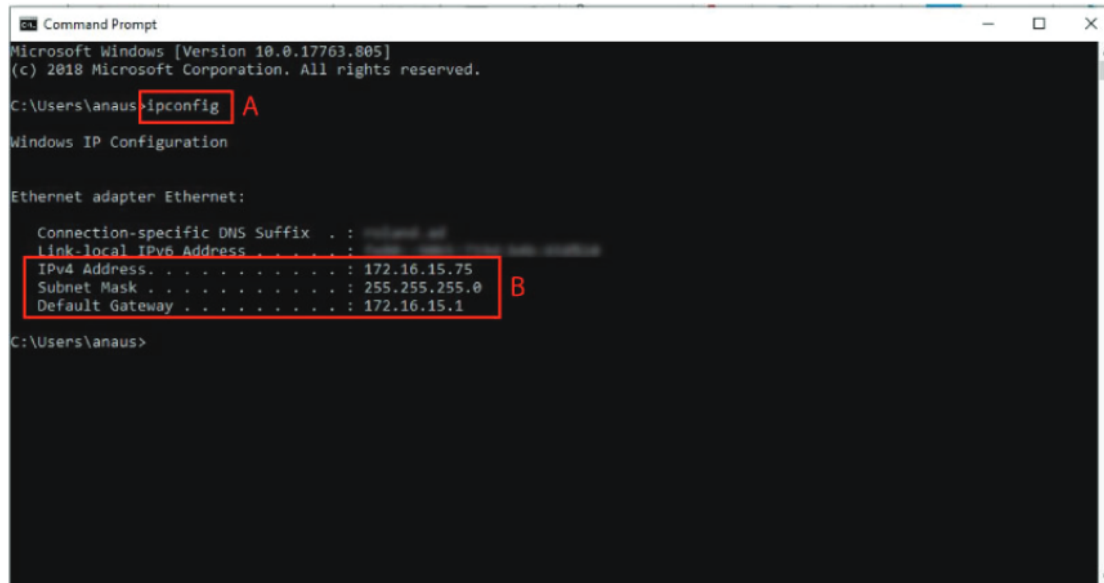
C:\Users\[USER ACCOUNT]\AppData\Roaming\Microsoft\Windows\Start Menu\Programs\System Tools

C. Retrieve list of IP configurations

Type in "ipconfig" (no quotations) and press Enter key (A)

You should see listed under "Ethernet adapter Ethernet" or Ethernet adapter Local Area Connection" the following numbers (B):

- IPv4 Address
- Subnet Mask
- Default Gateway



```
Microsoft Windows [Version 10.0.17763.805]
(c) 2018 Microsoft Corporation. All rights reserved.

C:\Users\anaus>ipconfig

Windows IP Configuration

Ethernet adapter Ethernet:

    Connection-specific DNS Suffix  . : 
    Link-local IPv6 Address . . . . . : fe80::...
    IPv4 Address. . . . . : 172.16.15.75
    Subnet Mask . . . . . : 255.255.255.0
    Default Gateway . . . . . : 172.16.15.1

C:\Users\anaus>
```

If you do not see either of those configurations when you run "ipconfig":

- Confirm the printer is powered on
- Confirm the Ethernet cable is securely inserted into the port on the printer – you should see a **steady green light** and a **flashing orange light** near the port
- Restart your modem/gateway/router/computer/printer
- Try connecting the printer directly to the computer with the Ethernet cable
- Try replacing the Ethernet cable

Keep a copy of the above info somewhere for Easy Access.

STEP 3: Reset the Lan on the actual Unit ([\(PDF\) Roland-PrintServer Network Settings Guide | xiami redmi3 - Academia.edu](#))

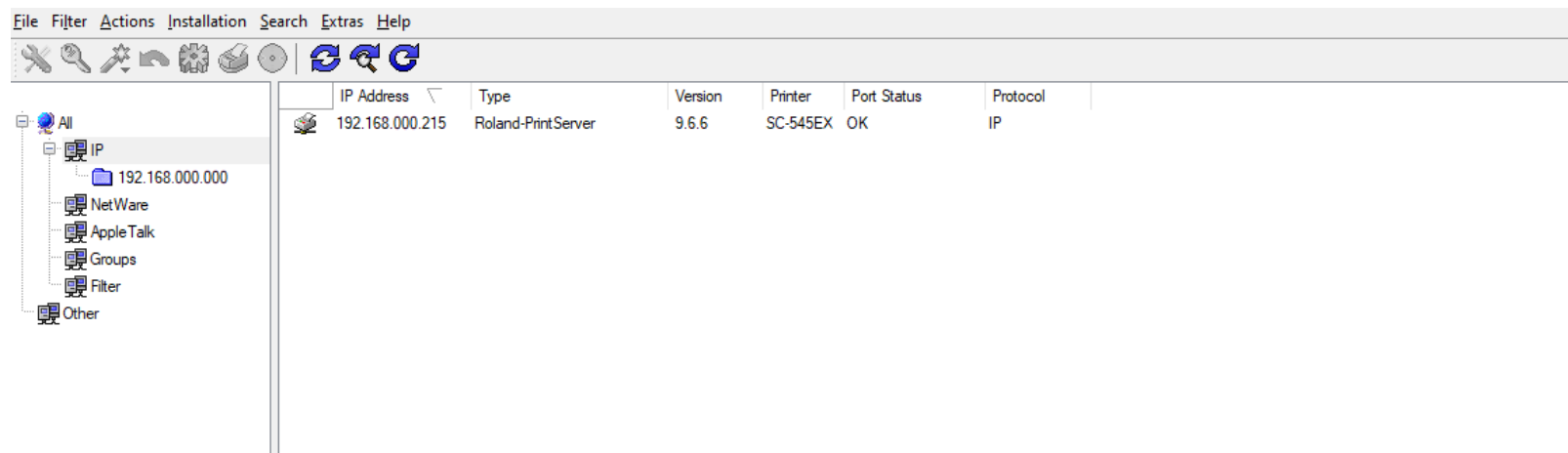
Resetting the Roland-PrintServer

Follow the steps below to clear all settings and return them to the factory defaults.

1. Switch the printer's main power off (or Roland-PrintServer).
2. Keep the small blue button pressed.
* If you're using a built-in type, the blue button is next to the Ethernet connector.
3. Switch the printer's main power on (or Roland-PrintServer).
The green and yellow lights are blinking rapidly.
4. Release the button within five seconds.
The green and yellow lights flash in alternation.
5. Press the button again.
The parameters are reset and both lights blink three times. The yellow light then blinks regularly.
6. Switch the printer's main power off (or Roland-PrintServer).

STEP 4: Making the Initial Connection

- Download 'print_server_nettool_1.8' from Roland DG Website (USA)
- Follow through this video: https://www.youtube.com/v/bp_sy782z2k&hd=1&autoplay=1
- Now for me, The IP kept going into 'BIOS' Mode. I had a lot of replies to this query but I literally had to do my own research to get it sorted!
- Please note, I AM NOT a Roland Technician! But this worked for me and I am sharing it just in case it happens to you.
- Firstly, I had to enable Net bootup on my Bios Setting (<https://www.youtube.com/watch?v=g8XUW1iRnB8>)
- Next, Opened the Print Server Net Tool I just downloaded. I followed up to the point in the instructional video where I assigned a New IP address to the printer but I DID NOT REFRESH! The IP address I assigned was 198.162.000.215.
- Then Clicked on the Firmware update (The only other coloured icon on the application at this stage). This will look for a '.bin file'.
- Since I had the initial Install CD (I think the Versa Works Install CD), I found a file named 'po9_6_6.bin'. I Chose this file.
- Once uploaded, I had to literally wait for 5 - 15min for Bios mode to change to 'Roland-Print Server' (FYI - I DID NOT refresh through this time - I did it by itself.)
- Once the above was done, it looked like this:



STEP 5: Installing Versaworks

- Initially installed Version 1 of the program as I had it handy.
- Initialised the program and connected to printer by typing in the appropriate values.
- Once the above was done, did not configure anything else and followed the instructions on <http://download.rolanddg.jp/en/color.html#rvwlocalup> to get to Version 5.5.1.

Once the above is done, YOU ARE SET!!

Hope this helped someone!! :)