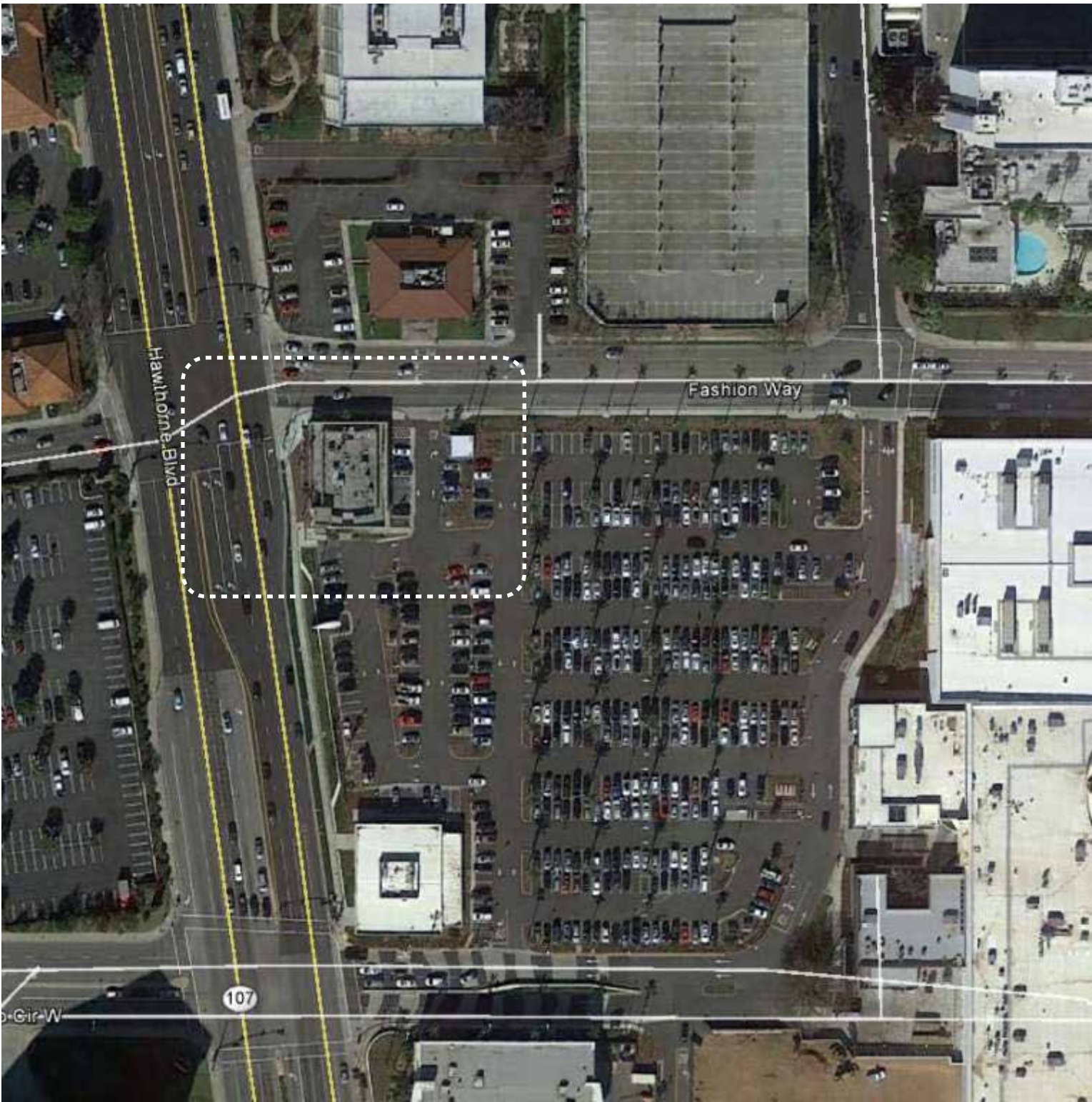
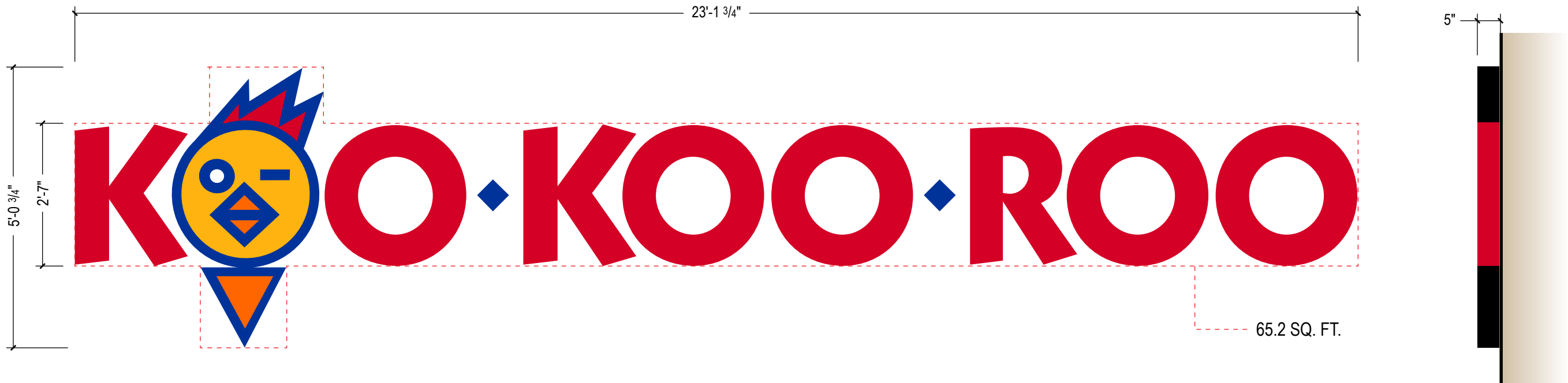


1 SITE PLAN
NOT TO SCALE
A.1: INTERNALLY ILLUMINATED WALL SIGN
A.2: INTERNALLY ILLUMINATED WALL SIGN
A.3: INTERNALLY ILLUMINATED WALL SIGN
B.1: INTERNALLY ILLUMINATED MONUMENT SIGN
C.1: EXISTING INTERNALLY ILLUMINATED SIGN TO REMAIN (XXX SQ. FT.)



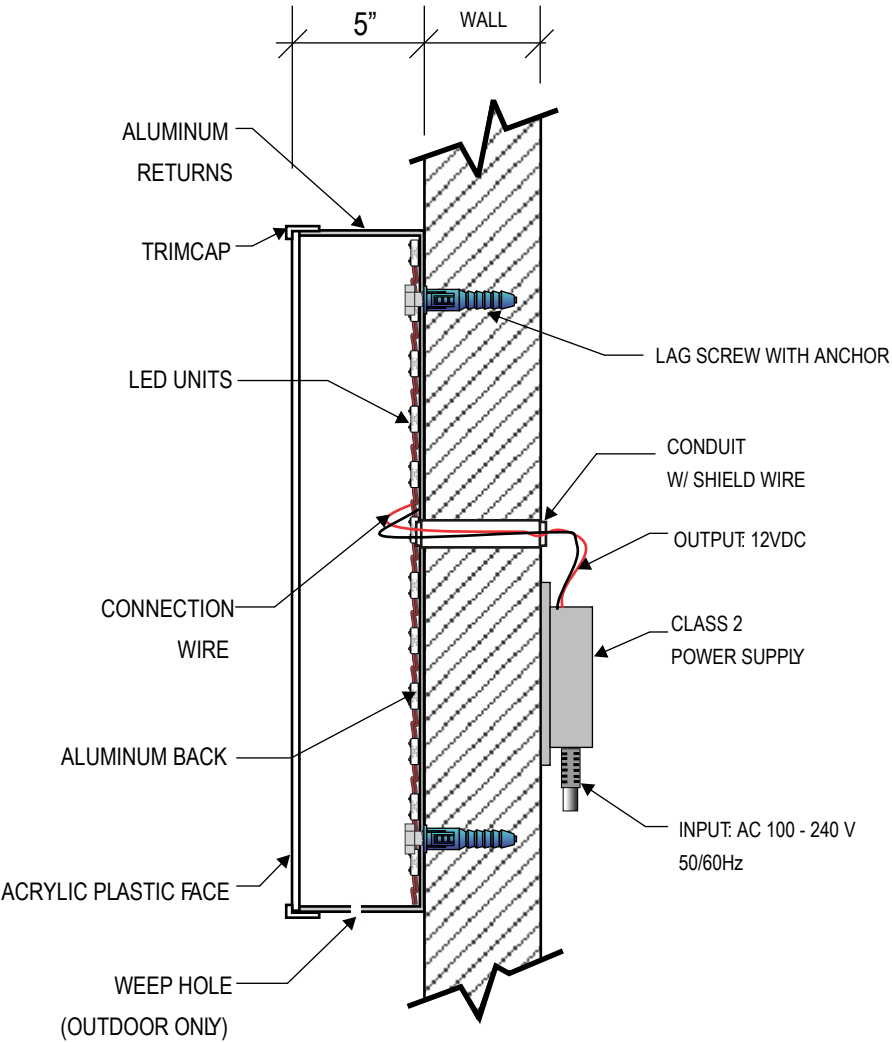
2 LOCATION MAP
NOT TO SCALE



A ILLUMINATED CHANNEL LETTERS AND LOGO
SCALE: 1/2"=1'-0"

- SPECIFICATIONS:
1. ILLUMINATED PAN CHANNEL LETTERS AND LOGO
 2. COLORS TO MATCH CORPORATE COLOR SPECS AS CLOSELY AS POSSIBLE
 3. CHANNEL LETTERS TO HAVE RED ACRYLIC FACES WITH RED TRIMCAP AND RED RETURNS
 4. CHANNEL LOGO TO HAVE APPLIED VINYL OVER 7328 WHITE PLEX WITH BLACK TRIMCAP AND BLACK RETURNS
 5. LED ILLUMINATION

QTY: THREE (3) SETS
AREA: 65.2 SQ. F T.



Electrical requirements

(1) 120V 20A circuit req'd

UL labels required away from public view

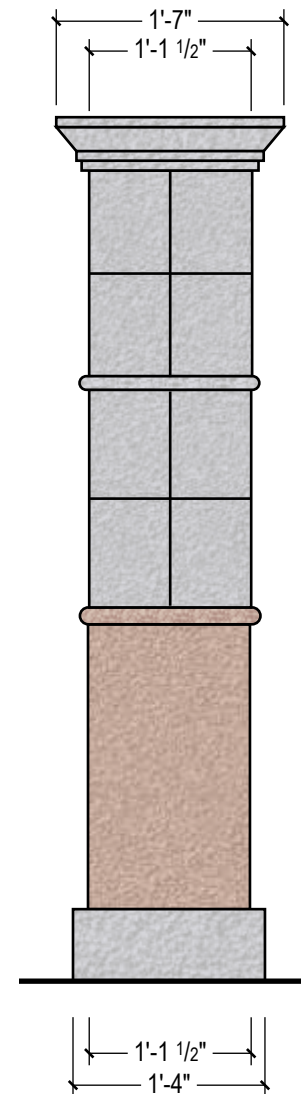
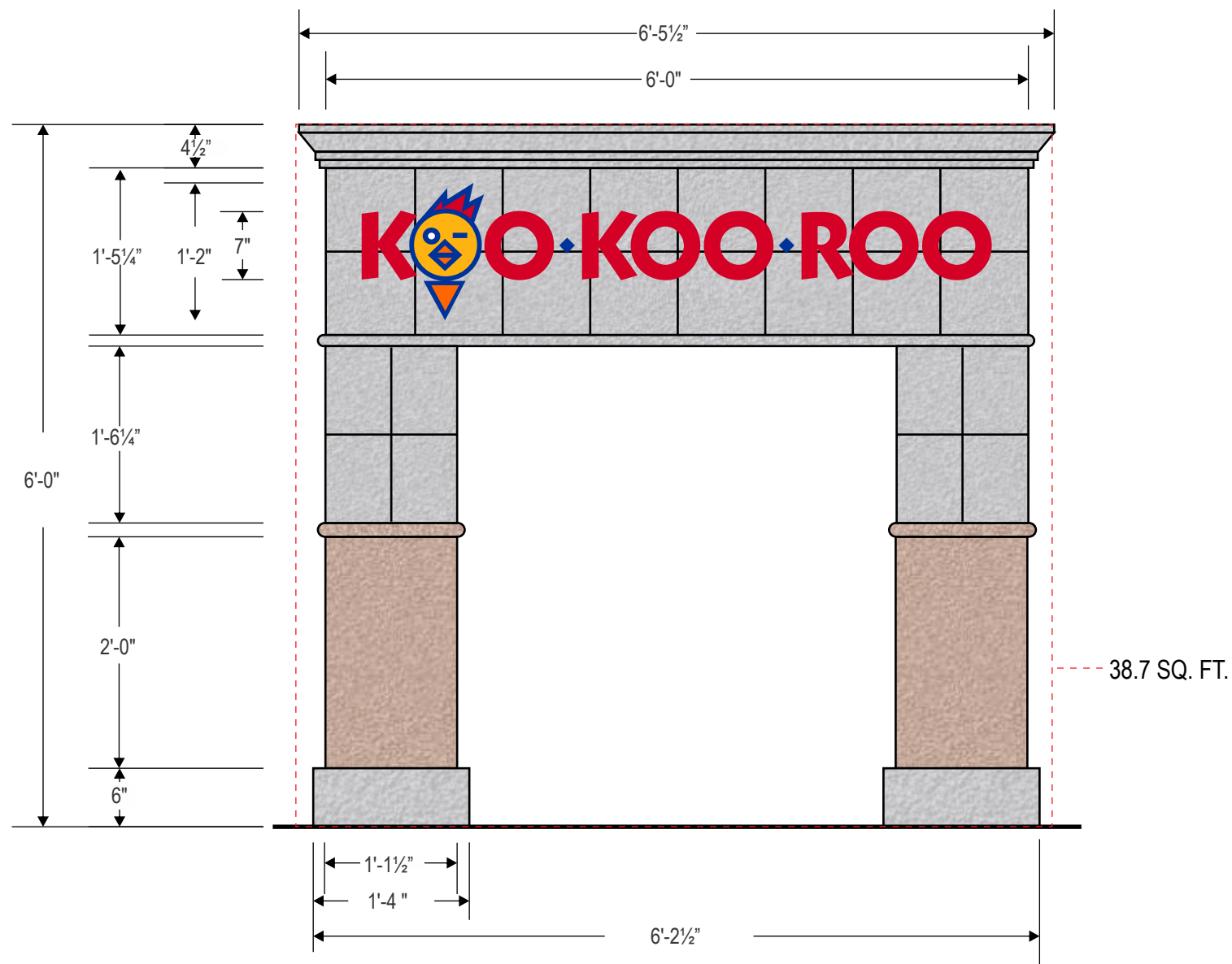
IMPORTANT NOTE

ALL ELECTRICAL PRIMARY CIRCUITS MUST BE DEDICATED ISOLATED CIRCUITS PROVIDED BY CLIENT/OTHER.

GC TO PROVIDE ACCESSIBILITY TO REMOTE TRANSFORMERS FOR INSTALL AND SERVICE.

FINAL ELECTRICAL HOOK UP BY OTHERS.





B D/F INTERNALLY ILLUMINATED MONUMENT SIGN
SCALE: 3/4"=1'-0"

QTY: ONE (1)
AREA: 38.7 SQ. FT.





SPECIFICATIONS:

1. CUSTOM FABRICATED D/F MONUMENT SIGN
2. ALUMINUM CONSTRUCTION
3. COPY IS ROUTED OUT AND BACKED WITH 7328 WHITE ACRYLIC PLASTIC
4. APPLIED FIRST SURFACE TRANSLUCENT VINYL GRAPHICS MATCHING CORPORATE COLOR SPECIFICATIONS
5. ILLUMINATION VIA INTERNAL HIGH OUTPUT FLORESCENT LAMPS OR INTERNAL GRID LEDS
6. SIGN CLADDING TO HAVE TEXTURE COAT STUCCO FINISHCOLORS TO MATCH BUILDING COLORS
7. ONE 120V 20 A DEDICATED SIGN CIRCUIT REQUIRED.120V DISCONNECT SWITCH INSTALLED ON SIDE FACING BUILDING.





1 PHOTO ELEVATION
SCALE: N.T.S.

Drawing No 06-10-0251 B.1		Project: KOO KOO ROO #413						
		Location: TORRANCE , CA		Service Order No.				
		Sales Rep:	Date: 10/29/06	Designer:	Scale:			
		Shop file path:		Customer Approval:	Date of Approval:	