

1. Check and Replace RF Motor
2. Download and install Mutoh Service Assistant version 4.0.9.0 and Mutoh MEA Software
3. Turn Off Windows Firewall and Virus protection
4. Boot Printer in Board Mode (Hold Left arrow and Power Button at same time)
5. Open MSA Tool on PC (Mutoh Service Assistant) latest version is 4.0.9.0
6. In Software switch to *technician mode*: to download Parameters from old board
 - A. Click Help ==> Version
 - B. Double Click **MSA LOGO** then Double Click **Mutoh LOGO**
 - C. Press OK
 - D. After clicking OK the main window appears. Then Double Click the **Mutoh LOGO** in the lower right corner – *sometimes you have to try this several times to get password screen to open up*
 - E. Enter UserName & Password
 Username: USA_M
 Password: 3/lt *(lowercase L lowercase T)*
 - F. New Window Appears....*May have to try upper steps a couple times to make it work*
 - G. Select Parameter Download – Select OK – Select location to save file
(After new board is installed reverse steps to upload parameters)
 - H.
7. Take Picture of mainboard installed and note location of all cabling
8. Remove the SODIMM memory card from old board and replace in the new board – make sure it is seated well and “clicks”
9. Detach the 46 connectors all listed in the Service Manual and note location for reinstall.
10. Remove the 6 screws that hold the Main board assembly
11. Remove Main board – Replace with new – reconnect all the cables
12. Install the firmware
 - Note: Use Mutoh MEA software
13. Install the Parameters from backup – NOTE Use Mutoh Service Assistant software MAI version 4.0.9.0 in Secret Technician Mode...see above
 - You must Register the Serial number with the printer on the printer FIRST before loading parameters – Boot printer in Diagnostic mode holding right key and up down keys.....select update parameters and enter printer serial number

BELOW are a few pages from the tech manual I found helpful....

7.3.5 Firmware Installation

This section describes the procedure to install the firmware.

The NVRAM (Flash-ROM) on the MAIN board assembly stores the programs (firmware) that control the machine operations.

When performing the following maintenance works, always install the firmware.

- Replacing the MAIN board assembly
- Updating the firmware

CAUTION

- Installing wrong firmware may disable plotter startup. In this case, reinstallation with special jig is required. Pay careful attention to the transferred file types.

(1) Firmware Transfer

The following explains the procedure to transfer firmware.

Follow the steps below.

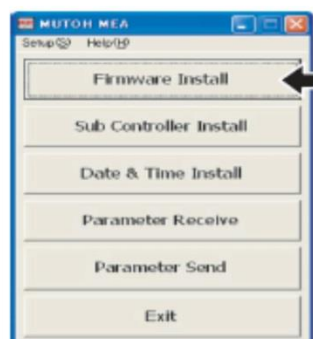
NOTE

When connecting the plotter and PC on a one-to-one basis, use "crossover cable". When connecting the plotter and PC via hub, use "straight cable".

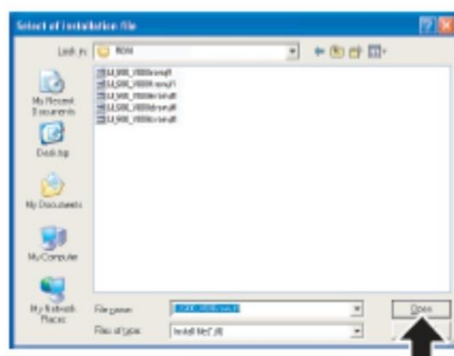
TIP

The extension of the firmware file is ".jfl".

1. Click [Firmware Install].
The "Select of installation file" window is displayed.



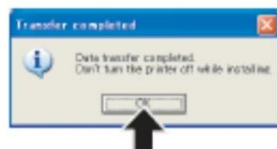
2. Select a file to be transferred from the folder where the firmware is saved, and click [Open].



3. In the "Firm installation check" window, click [OK].
Installation will start.



4. If the "Transfer completed" window opens, click [OK] to close the window.

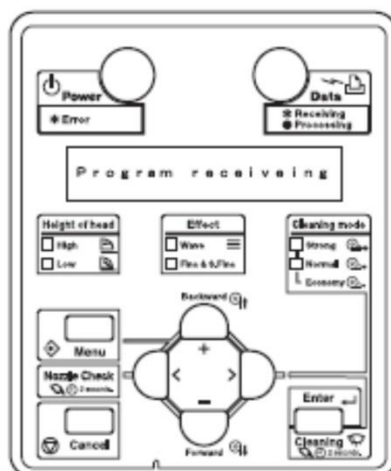


Even after the "Transfer completed" window is closed, program installation to the plotter is not completed. Never power off the plotter during the operation.

(2) Confirming Completion of Installation to Plotter

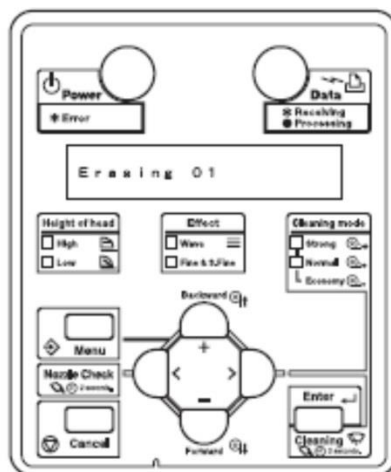
Program installation to plotter continues even after the "Transfer completed" window is closed. Check whether the program is properly installed from the operation panel.

1. When firmware transfer starts, the LCD display on the plotter's operation control panel changes to [Program receiving]. The Data LED flashes.



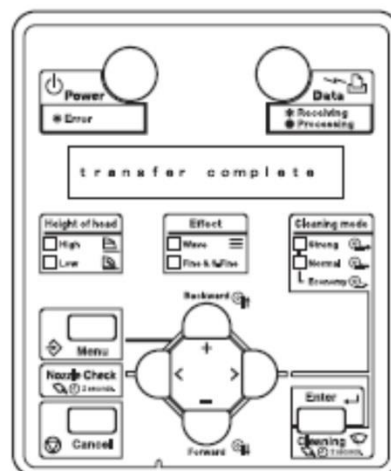
2. The LCD display changes as follows:

Erasing xx (xx is numeric)
 Copying xx (xx is numeric)
 Comparing xx (xx is numeric)

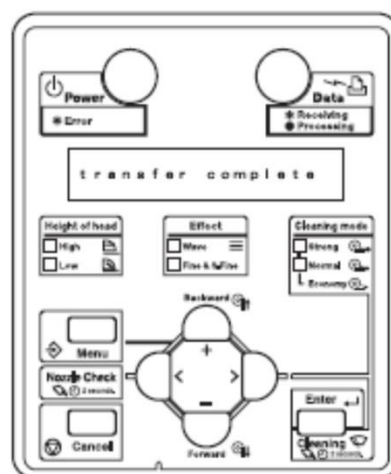

CAUTION

While the LCD display is in the Erasing to Comparing status, the power key is disabled. In this situation, never disconnect the plug of the plotter. Doing so may disable plotter startup, which will require reinstallation with special jig.

3. If the LCD displays [transfer complete], the buzzer sounds three times and only the Power LED turns on among all LEDs.



4. When [xxxxxx bytes recv (xx is numeric)] is displayed, installation completes. Turn off the plotter and restart it. Then check the version number displayed on the LCD.



NOTE

If an error occurs during installation, the buzzer sounds at intervals of 0.25 second, while the LCD displays error message and all LEDs of Roll, Sheet, Color and Black & white flash. In this case, follow the troubleshooting instructions. To stop the buzzer, press any key except for the power key once. Pressing the key once again will return the LCD display to "waiting for command" and only the Power LED on.

7.3.6 Sending Parameters

NOTE

Before sending parameters, perform the following work.

- Receiving parameters: ["7.3.4 Receiving Parameters" p.7-11](#)
- Firmware installation: ["7.3.5 Firmware Installation" p.7-12](#)

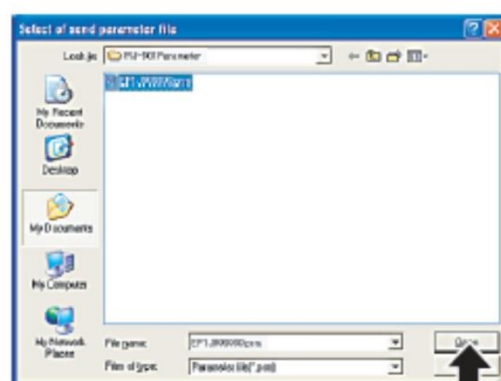
TIP

The extension of the firmware file is .jfl.

1. Click [Parameter Send].



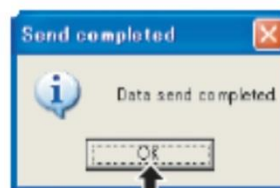
2. When the "Select of send parameter file" window opens, select the parameter file to be transferred and click [Open].



3. In the "Parameter Send check" window, click [OK].
Sending will start.



4. When sending completes and the "Send completed" window opens, click [OK].

**NOTE**

Almost as soon as the "Send completed" window is displayed, writing to plotter also finishes. If writing to plotter finishes successfully, the LCD displays the following:

Transfer complete

Buzzer sounds three times and only Power LED turns on. Then, when the LCD displays 16372 bytes recv parameter writing completes.

7.3.7 Sub Controller Installation

This section describes installation procedures of HEATER_CONT board firmware.

TIP

The extension of the sub controller file is .mfl.

1. Click [Sub Controller Install].

