

Applicable Models: AE-60, AE-102 AE-122

Removing the Carriage

Step 1: Remove the top cover (see instructions for Removing the Top Cover).

Step 2: Remove the left side cover (see instructions for Removing the Left and Right Side Cover).

Step 4: Place a piece of paper on the platten under the y axis head and clamp down with the pinch mechanisms. This is to protect the finish of the platten and to keep any loose hardware from falling through the platten near the x axis grit roller.

Step 5: Remove the (3) allen screws holding the y axis head cover and remove the cover (see figure 1).

Step 5: Remove the (3) allen screws holding the y axis head cover and remove the cover (see figure 1). **Step 6:** .

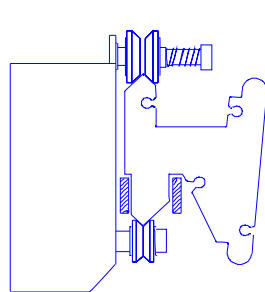


FIGURE 1

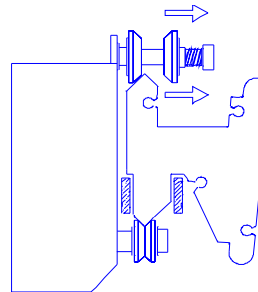


FIGURE 2

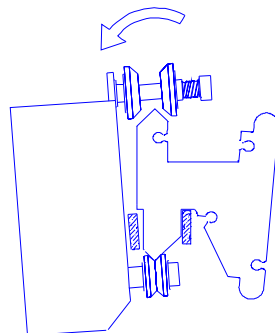


FIGURE 3

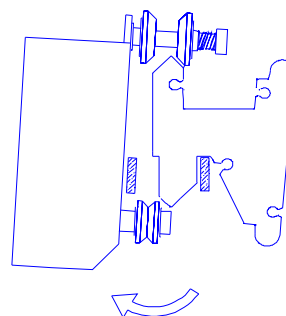


FIGURE 4

Applicable Models: AE-60, AE-101, AE-122

Removing the Carriage

Step 7: Remove the head by tipping it forward from the top until it clears the front of the rail, then lower the head to clear the bottom of the rail. Place the head face down onto the paper protecting the platten (see figure 2).

Step 8: Remove the flex cable (see figure 2). Note the orientation of the flex cable cable to the head.

Step 9: Remove the (2) allen screws securing the y axis belt from the back of the head (see figure 2). Be carefull to keep the belt attached the the belt clamp. If it comes loose from the belt clamp, attach the belt to the belt clamp with a little cyanoaclyate glue (fast glue) or fast curing epoxy.

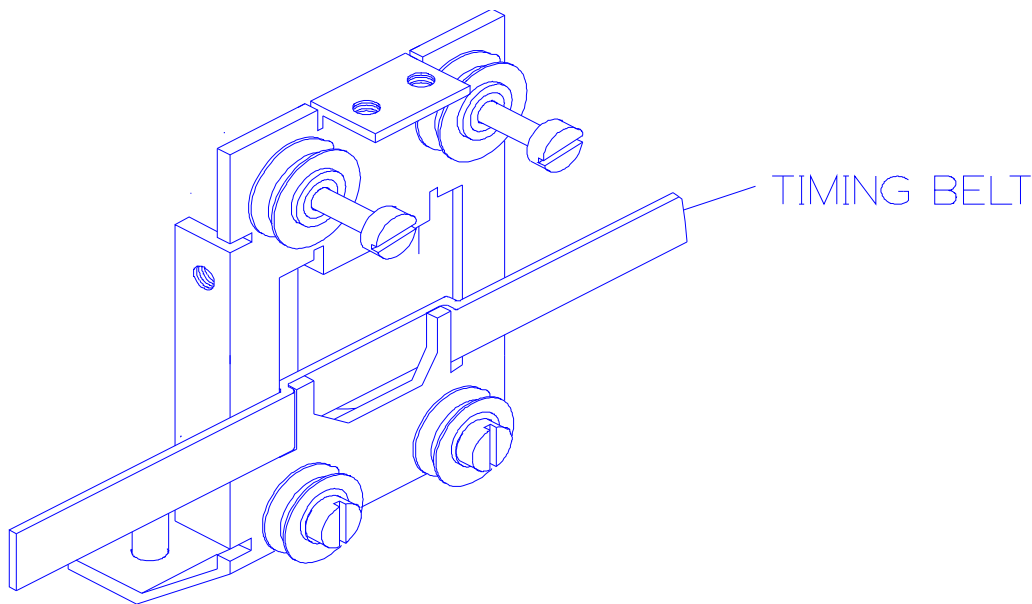


FIGURE 1

Applicable Models: AE-70, AE-101, AE120

Removing the Carriage

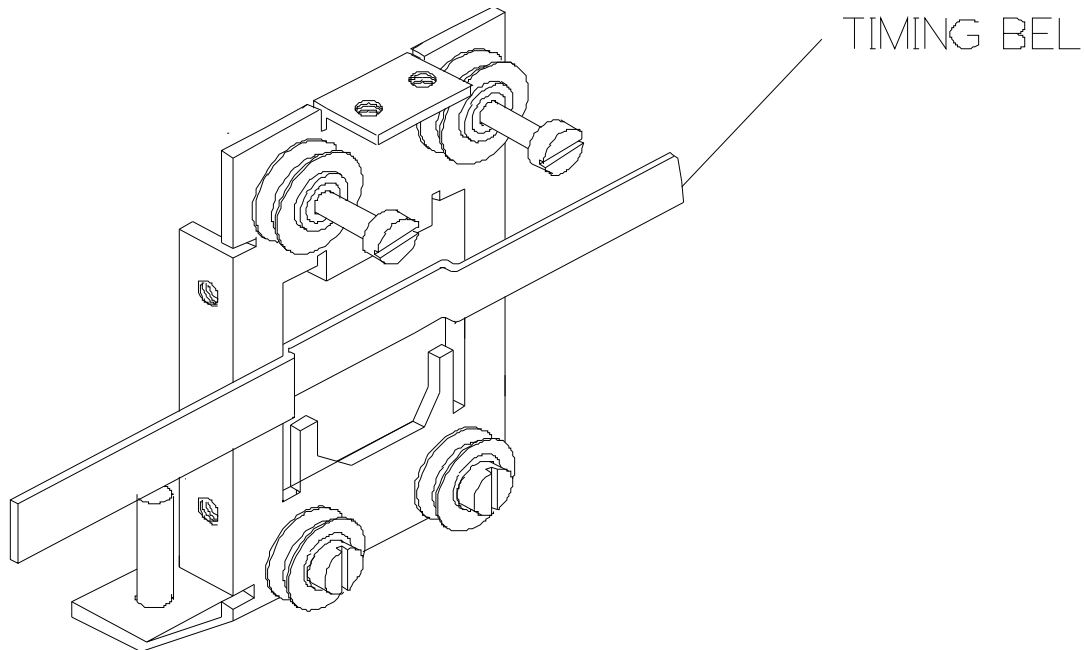


FIGURE 2

Replacing the Carriage

Step 1: Attach the belt and clamp to the back of the head using the (2) allen screws (see figure 2).

Be carefull to keep the belt attached the the belt clamp. If it comes loose from the belt clamp, attach the belt to the belt clamp with a little cyanoacylate glue (fast glue) or fast curing epoxy.

Step 2: Attach the flex cable to the underside of printed circiut board attached to the head (see figure 2). Make sure the flex cable is oriented correctly.

Applicable Models: AE-70, AE-101, AE120

Replacing the Carriage

Step 3: Make sure the bearing cams are adjusted to the highest point on the head. If necessary, turn them back and forth until the bearings are at the farthest distance from the bottom bearings.

Step 4: Tighten the (2) allen head screws holding the bearing cams to the head (see figure1).

Step 5: Attach the head by placing the bottom plastic bearings on the bottom of the rail and tipping it back from the top until the the top bearings are aligned with the center of the top rail.

Step 6: While holding the bottom plastic bearings against the bottom of the rail, turn the bearing cams counter-clockwise until the plastic bearings just contact the top of the rail (see figure 2). Do not turn the cams clockwise as this will cause the screws holding the cams to the head to loosen.

Step 7: Turn each cam a little at a time until all bearings have complete contact with the rail. If the bearings are too loose, quality will be lost. The bearings are adjusted correctly when they are not easily turned by hand while holding the head still. Both top bearings should have equal amounts of resistance. Be careful not to overtighten one as it will cause the other bearing to loosen.

Step 8: Attach the y axis head cover using the (3) allen screws (see figure 1).

Step 9: Adjust the the y axis belt (see instructions for Y Axis Belt Adjustment).

Step 10: Attach the left side cover (see instructions for Removing the Left and Right Side Cover).

Step 11: Attach the top cover (see instructions for Removing the Top Cover).

Important: It is necessary to re-tune the plotter in the service menu after head replacement. Each head/plotter has different tuning values. Refer to Technical Bulletin #007 for AE-70/101/120 Fine Tuning.