

Shadows in FlexiSIGN Pro ver 7.6

A short tutorial



Relatively easy though time consuming shadow effects in FlexiSign Pro no plug-ins needed... Flexi's support for bitmap editing is rudimentary at best don't expect miracles...that being said you can get some things done with no need for PhotoShop or other similar app. if need be.

We'll start with basic text...Aurora here around 10" x 36"
Duplicate your text, I chose a medium grey - you'll want to tweak this later (you can do more with grey then particular colors you'll see later)

surround the text with a rectangle - Choose "no fill"....you could also use a color....depending on your project....

You need the rectangle below the shadow text, If you tried to just convert the text to a bitmap Flexi would crop it (the text) way to close not leaving room for the blur we'll apply later.....



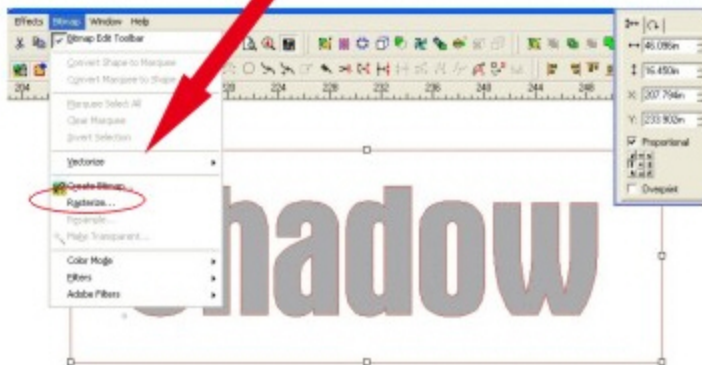


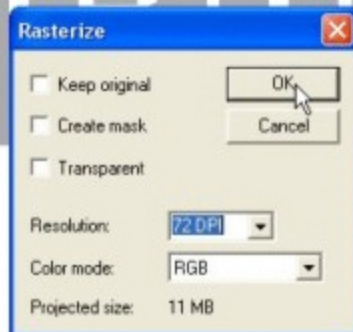
rectangle

no fill

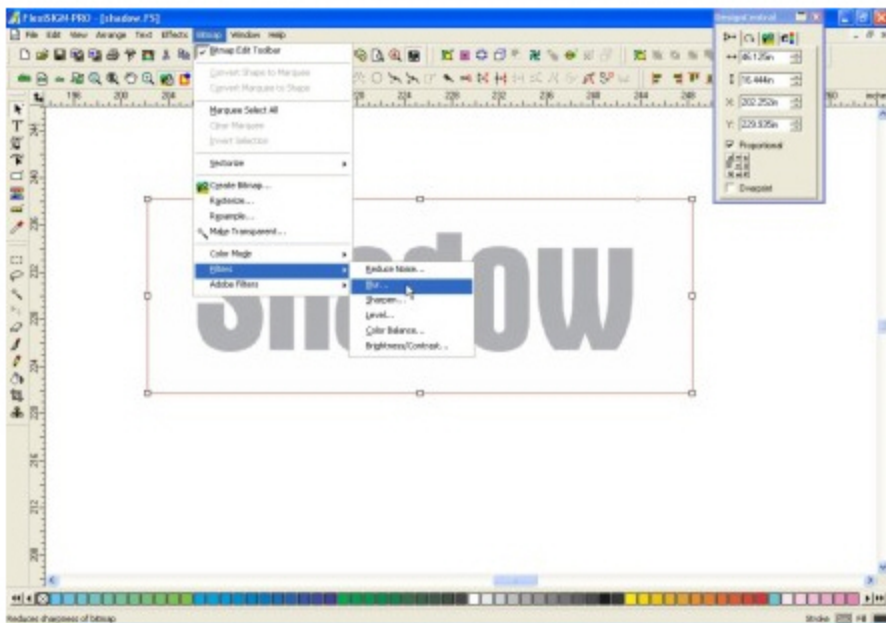
select both (text and rectangle)

rasterize





Rasterize both text and rectangle together, you can leave it at 72dpi



Back to the "Bitmap" menu - "Filters" - "Blur"

Set it to 100% and Radius 16 - Apply

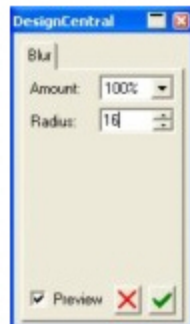
Set it to 100% and Radius 16 - Apply

Set it to 100% and Radius 16 - Apply

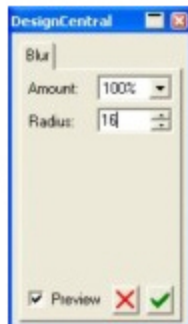
Set it to 100% and Radius 16 - Apply

Marvel at SA International's application development prowess.....amazing and for only \$4995.00, with strings attached!

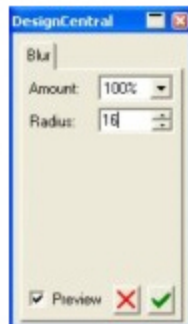
Y



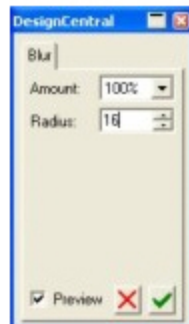
+



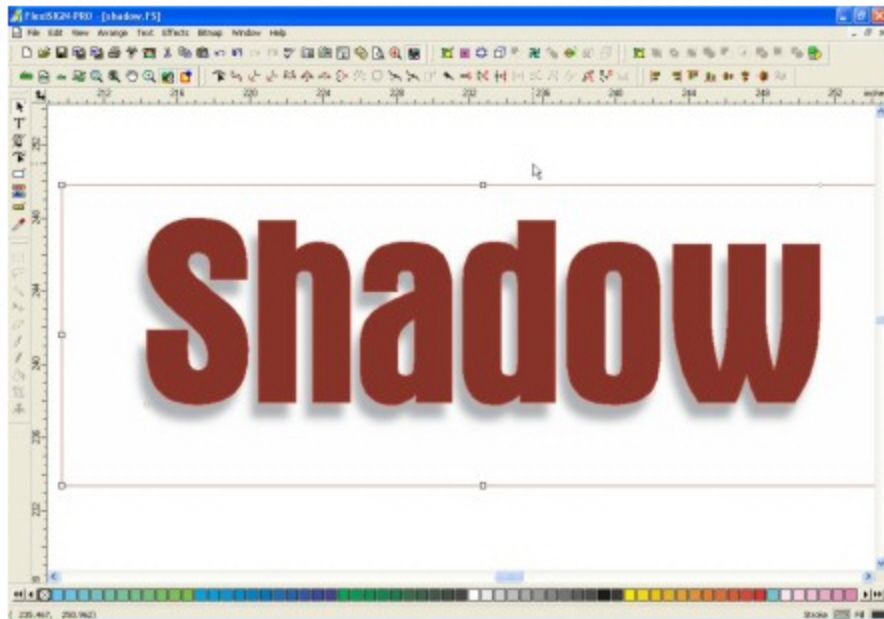
+



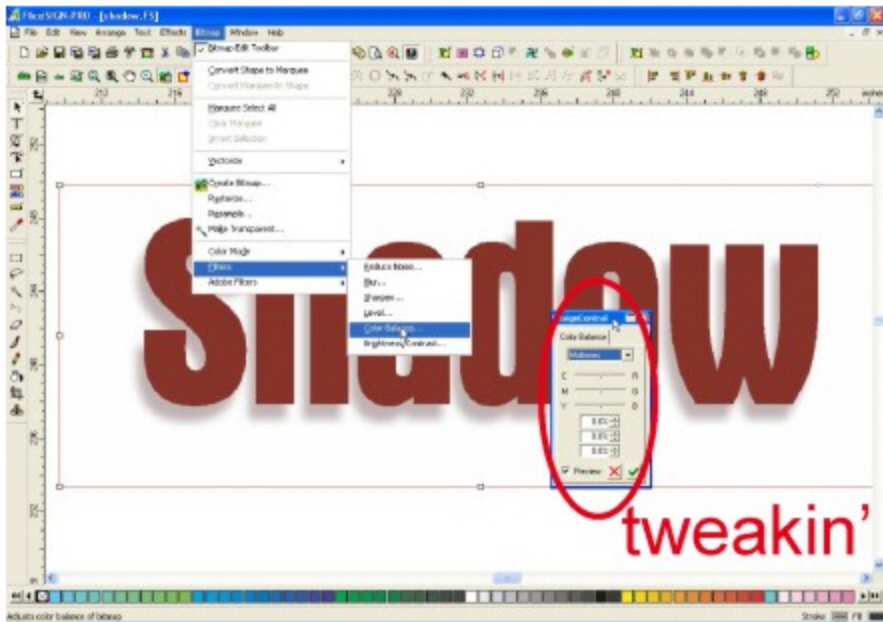
+



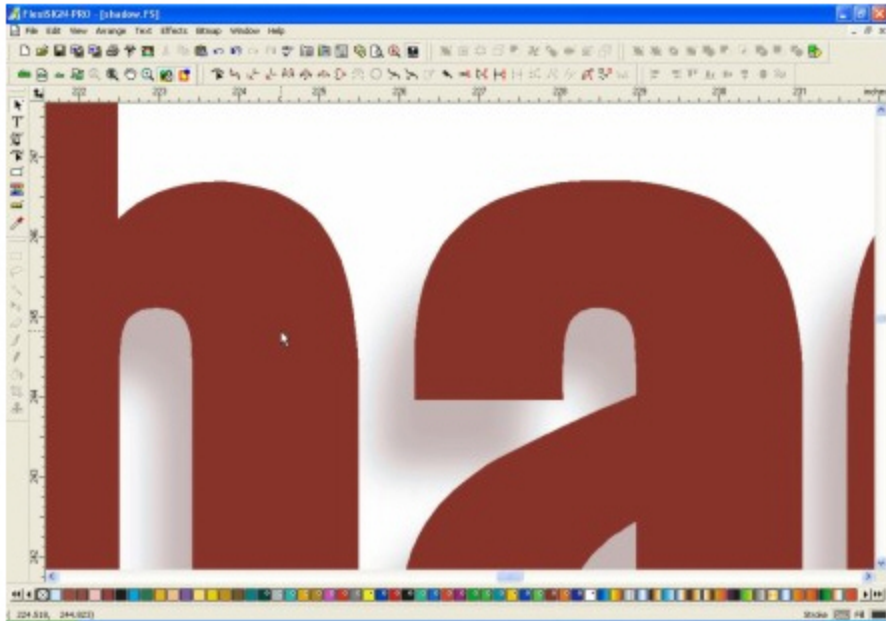
ehh!



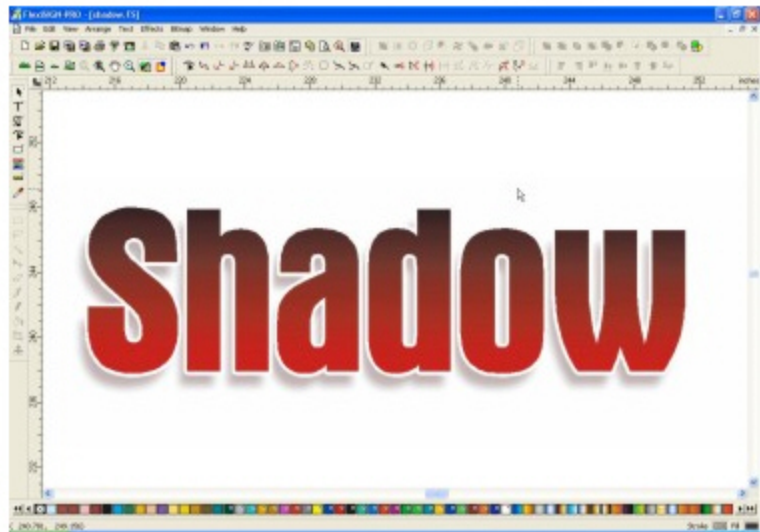
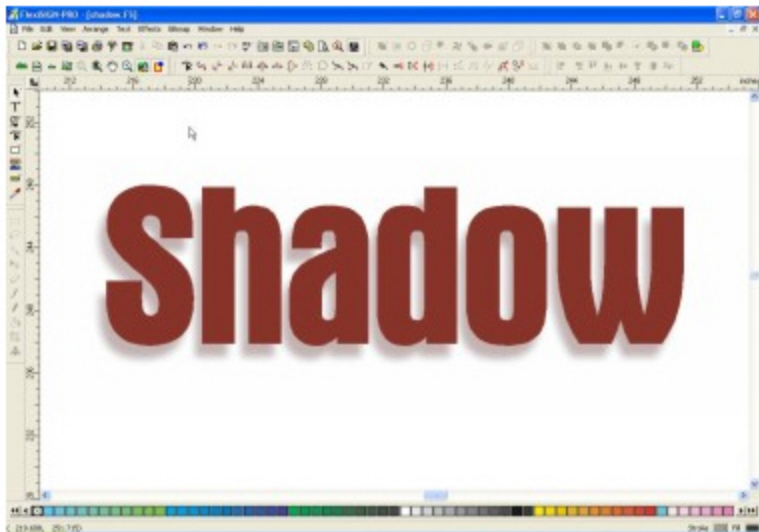
Find your original text, place it on top of your newly created, extra special, look ma' no plugins - shadow.



I like to go back and tweak it abit - "Bitmap" - "Filters" "Color Balance" Here I added a little cyan, more in-tune with the letter color.....



Not Bad! See told ya you wouldn't need the resolution....



Looks good with a white outline....

You can use the bitmap/blur thing for many effects - highlights - glows etc.... I rarely use plug-ins...the process here, though laborious with Flexi is much faster to do in CorelDRAW! and looks far better then any plug in can achieve....