

# ONYX Tutorials:

## Using the Tiling Workflow

### Introduction

There comes a time when a job is too large for the printer and needs to be tiled. This tutorial will cover how to tile a job in Job Editor and automate tiling workflows using Quick Sets

### Step 1 - Setting the Tiles in Job Editor

First we need to load a job into Job Editor. Click the *Open* button in RIP-Queue. Enable the option *Open in Job Editor*. Select the job and click *Open*.

Start by going to the *Tiling Setup* tab. Click *Enable Tiling*. In this tutorial we will not enable *Submit tiles as separate jobs*. We will be using the nest option *Flip every other tile*. This option does not work with tiles submitted as separate jobs.

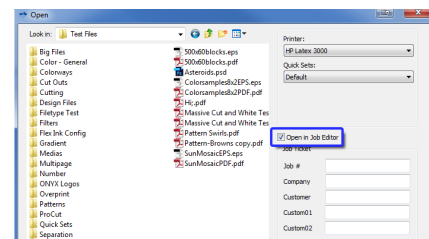


Figure 1: Open a job into Job Editor

Next we will divide the image into 5 tiles at a max width of 50 inches. Change the *Width* for the *Default Tile* section to 50.0 inches.

At the bottom is the *Overlap*. Each tile will have 1 inch overlap on each side. Set the overlap value to 2.0 inches.

### Step 2 - Sizing the Image in Job Editor

Next go to the *Preview and Size* tab. We will enlarge our file by 1000%. Change the magnification value to 1000%. The tiles will now be indicated by dotted lines on the image preview.

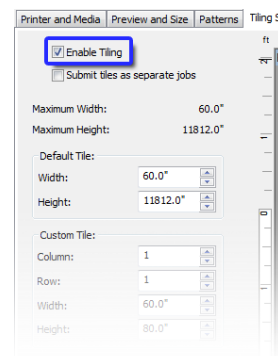


Figure 2: Enable Tiling

Go to the *Print* tab and click *Submit*.

### Step 3 - Flip Every Other Tile

As the job rips we can set the printer placement settings to flip every other tile. This option helps reduce color shift problems at print time.

Highlight the printer and click *Change*. Click on the *Setup* button. Check mark the option *Flip every other tile*. Click *OK* to accept the changes.

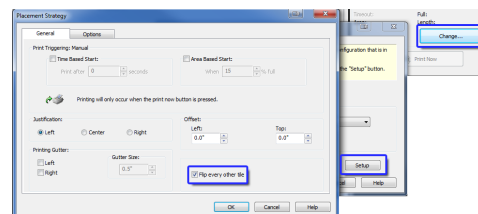


Figure 3: Flip every other tile

## Using Quick Sets

When tiling a job requires the same tiling settings, a Quick Set can be used to automate this workflow.

1. Highlight the printer and click *Configure Printer*
2. In the *Quick Sets* tab, click *New*
3. Give the Quick Set a name and click the *Advanced* button in the lower left
4. In the new window click on *Tiles* and enable *Tiling*
5. Enter the required *Overlap* and set the *Width* and *Height* under the *Default Tile* section. Click *OK*

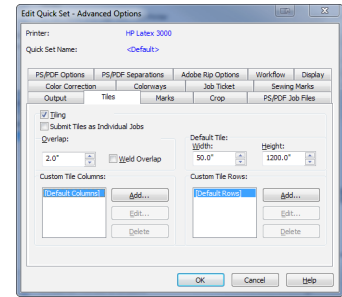


Figure 4: Quick Set tiling options

When a job needs to be tiled use the tiling Quick Set and then print it.

For more information and videos about tiling go to [www.onyxgfx.com](http://www.onyxgfx.com).