

OSF (Mimaki Output Spool File) Simplified Manual

File Output tool
Compliant with OSFv1.26



OSF.exe

Contents

1. Outputting a file.....	2
2. When printer is replaced.....	3
3. Adding a file.....	4
4. Deleting a file.....	4

Do not operation those items not described in this Manual. We would not guarantee the operation when such other items were manipulated.

3) Selecting a file

On this column, a list of all files that can be output is shown. If you select the file you want to output, it is reversed with blue color, which means it is ready for outputting.

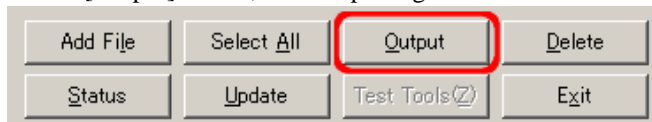
(For adding a file, refer to “3. Adding a file”).

File Name	Size	Interface	Printer	Copies	Status	Update
C:\WORK\Data\30MB_AA_DataFile.bin	30720KB			1		2005/09/09
C:\WORK\Data\40Byte_TXT_DataFile.t	1KB			1		2005/09/16
C:\WORK\Data\50MB_AA_DataFile.bin	51200KB			1		2005/09/09
C:\WORK\Data\100MB_FF_DataFile.bin	102400KB			1		2005/09/09
C:\WORK\Data\150MB_FF_DataFile.bin	153600KB			1		2005/09/09
..N2A_720720VD6C_H8B_0300(112MB)	115003KB			1		2005/02/05

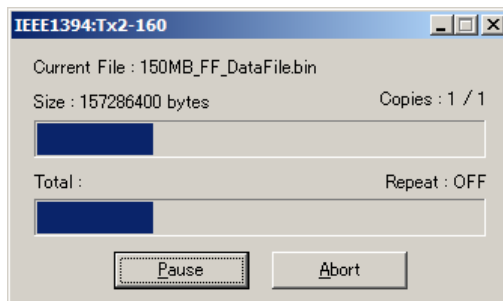
If you click, the selected file is shown in blue color.

4) Starting output

Click [Output] button, then outputting is started.



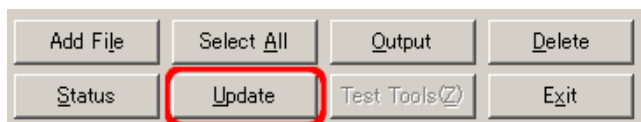
While outputting the file, the following dialog is shown.



*If you click [Abort] button, you can suspend the data transmission.

2. When printer is replaced

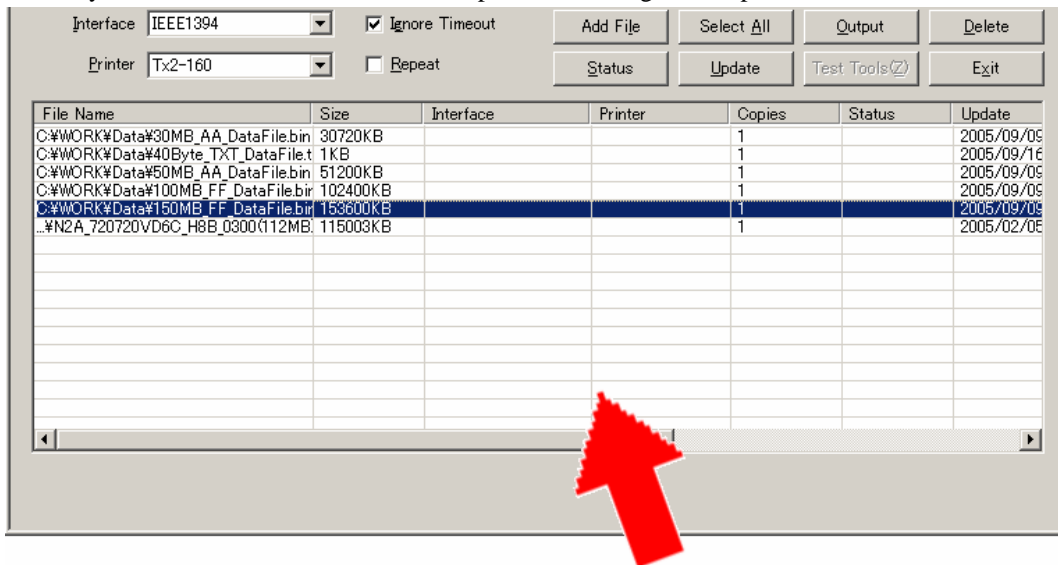
When the printer is replaced with another one, click [Update] button, then the new printer is recognized. No need to restart the tool.



*When a printer is replaced, make sure to click [Update].

3. Adding a file

When you want to add a new file to the output file list, drag and drop the desired file on the list.

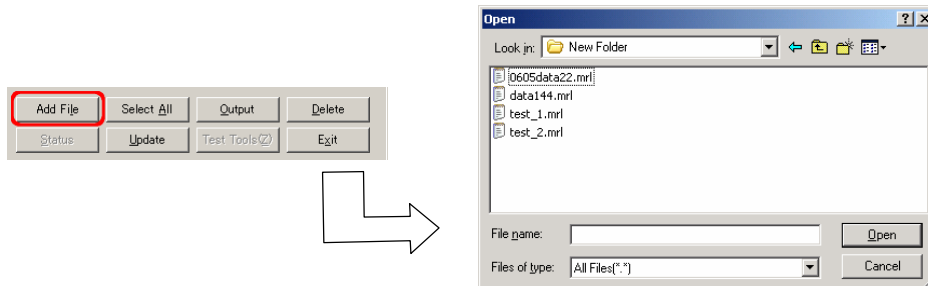


Graps the file and bring it within the list.



*For your reference

You may also add a file with [Add File] button. If you click this button, a file dialog appears. Select the file you wish to add.



4. Deleting a file

When you want to delete a file from the list, select the file you want to delete and click [Delete] button. (The file is deleted from the list and the file itself is not deleted.)

