

What's New Caldera 10.2

This document presents most of the new features of the **10.2 upgrade**. **Caldera 10.2** is a minor upgrade and it will work with existing **V10** licenses. However, some of the new features require a new license (see details below).

Caldera RIP Version 10.2

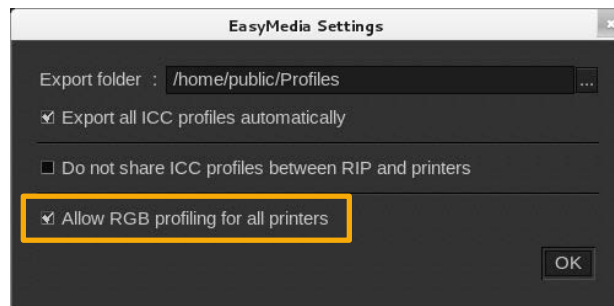
Caldera® and all Caldera products mentioned in this publication are trademarks of Caldera.

New option

RGB workflow

This option requires a valid RGB workflow license.

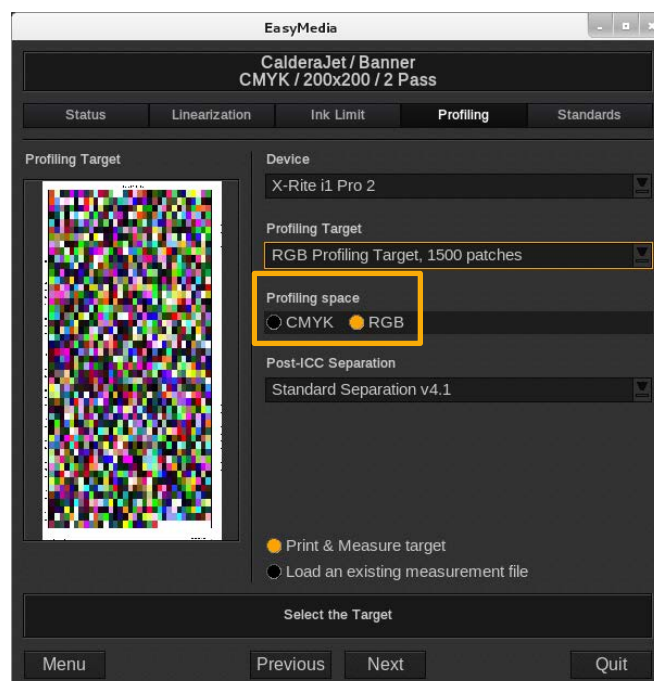
With **Caldera** RGB profiles, the complete workflow can be done from design to print in the same RGB color space. Thanks to this, the number of tries to achieve proper color is sensibly decreased which is a time saver, especially for the textile industry where pre and post treatment of the fabric are quite important. The RGB workflow is designed for decoration markets such as textile, wallpaper, ceramic, glass...



How does it work?

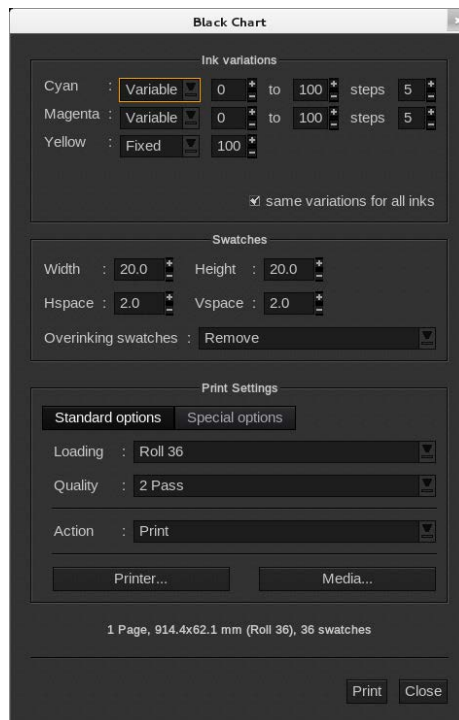
Designers usually work in RGB whereas printers use CMYK+N, a color space that does not entirely cover the RGB color space color used for display. So some colors cannot be printed as some printed colors cannot be displayed on the screen.

Caldera is now able to create RGB output profiles that can easily be exported to be used by the designers so they can work directly in a RGB profile that takes into account the print configuration.



Choice of Black

The main difference between an RGB output profile and a CMYK+N output profile is the ability to choose the desired Black before printing the profiling chart. This chart takes directly into account the kind of Black you want. You can also fully set your Black to your taste: you can define ink mixing or the use of black ink only to adapt your black to your media and the use you will have of it.

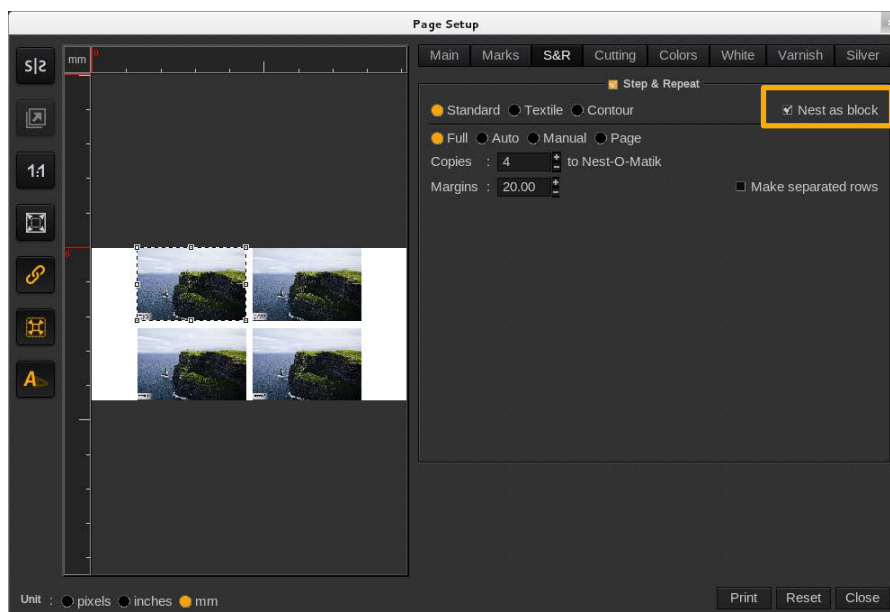


This tool helps you create a black swatch book to help you choose the proper parameters for ink mixing accordingly to your needs.

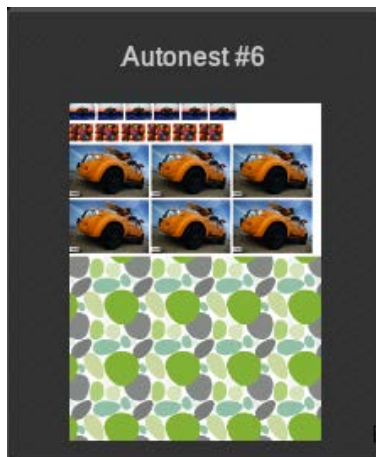
New feature

Step&Repeat Nesting

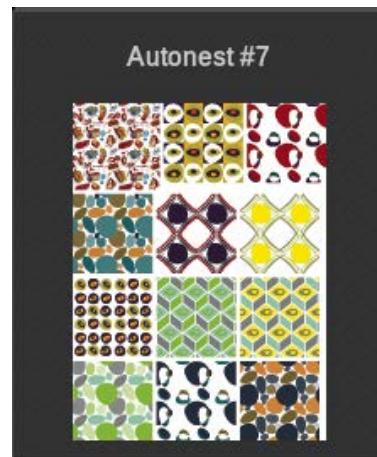
This new function allows you to nest as a block repetitions of the same image made by **Step&Repeat**. Then, the blocks are nested together but their images will not be mixed.



With this feature, you can easily create design swatch book for textile or decoration.



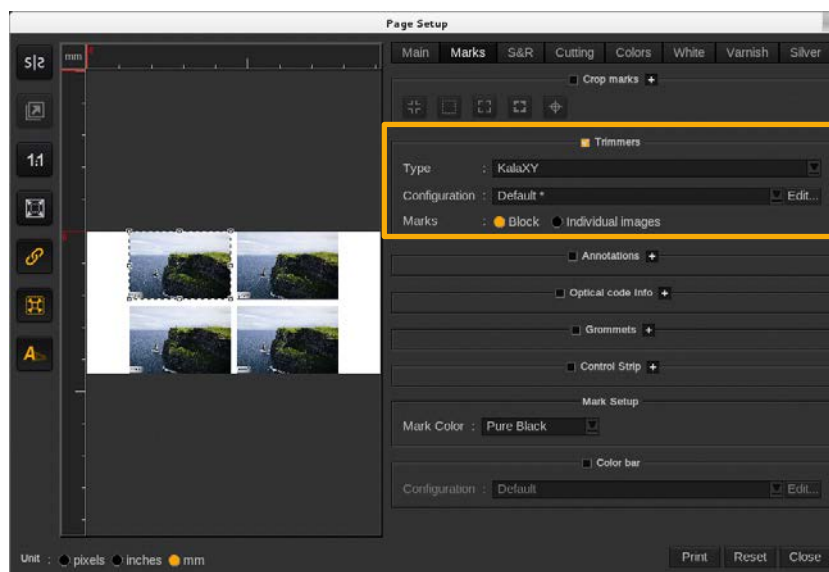
Example of blocks made with **Step&Repeat Textile** and **Standard** and nested with **Nest-O-Matik**.



Example of blocks made with **Tex&Repeat** to create a textile swatch book.

With the Trimmers

A new field appears in the **Trimmer** area of the *Page Setup* only when **Step&Repeat Nesting** is activated: **Marks**. It allows you to choose if you want to put cutting marks around the **Block** only or to consider every image of the block as **Individual Images**.



Limitations

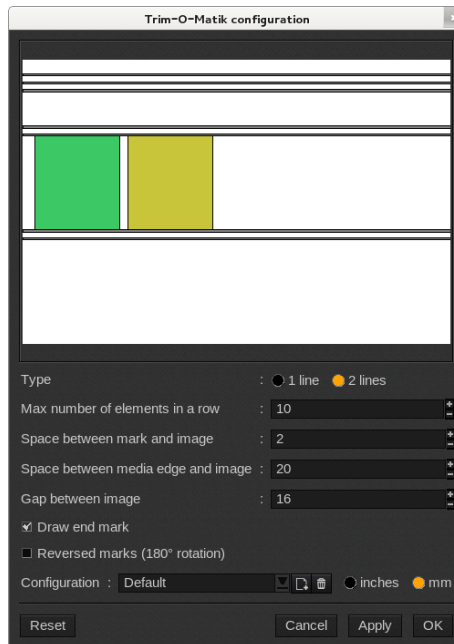
Be careful, **Tex&Repeat** is not compatible with cutting actions: either using the **Cut** tab or **Trimmers**. As for any other nesting, if the printing or cutting parameters are changed from one block to another, a new *Autonest* task will be created.

Improvements

Trimmers

This option requires a valid Trim-O-Matik license.

For Kala Trimmers: new view of the trimmer's configuration.



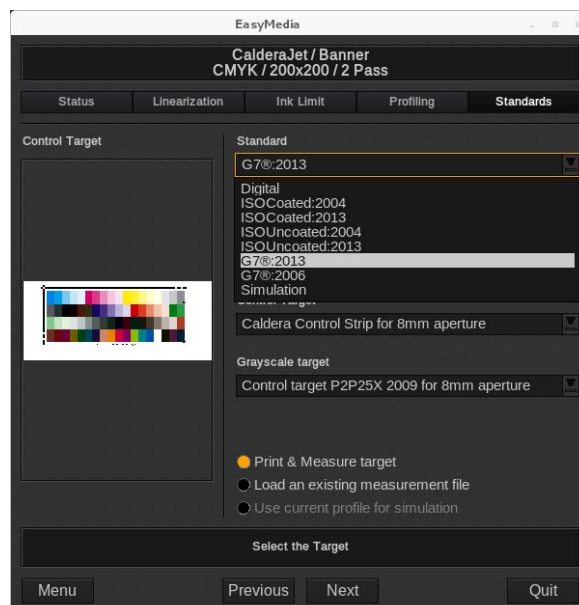
Print Standard Verifier

This option requires a valid Print Standard Verifier license.

The Standards profiles changed in 2013 to take into account the presence of OBA in the media. Caldera now integrates the ability to check the standards accordingly to these new profiles and restrictions. It also now makes the distinction between Coated and Uncoated standards.

List of the standards, their profiles and their measurement conditions

- ISOCoated:2004: linked to FOGRA 39L (M0)
- ISOCoated:2013: linked to FOGRA 51 (M1)
- ISOUncoated:2004: linked to FOGRA 29 (M0)
- ISOUncoated:2013: linked to FOGRA 52 (M1)
- G7®:2013: linked to GRACoL®/SWOP® 2013 (M1)
- G7®:2006: linked to GRACoL®/SWOP® 2006 (M0)



EasyMedia

You can now choose between standard observers when doing your profile (2 degrees, 10 degrees). Be careful it only works with spectral measures.

Spot Color

New color library: Pantone+ Extended Gamut Coated.

Color Management

New presentation of the profile browser. It shows Caldera standards profiles and favorited profiles on separated lists.

Documentation

New category: Copyright to easily find Caldera License agreement and Third-party document.

New documents:

- HowTo – the RGB workflow (English and French)
- HowTo use Step&Repeat Nesting (English and French)
- HowTo set and use GrandCut (English, French and Spanish)
- HowTo set and use InkPerformer (Russian)
- HowTo create a new EasyMedia project (English, French, Spanish)
- HowTo prepare the devices before calibration (English, French, Spanish)
- HowTo use the Extra Marks (Spanish)
- HowTo add page size and print resolutions (Spanish)
- Technote Mimaki JV-CJV series (English and French)
- Technote Roland LEJ640 (English)

Discontinued Products, Modules and Systems

Linux

The Ubuntu community no longer supports the Kubuntu 8.04.

So the complete list of Linux systems supported in V10 is:

- Caldera Debian 1.1
- Caldera Debian 2.x - Recommended

Mac OS X

V10 will no longer support: "Snow Leopard" (10.6) and previous versions.

So the complete list of Mac systems supported in V10 is:

- Lion (10.7)
- Mountain Lion (10.8)
- Mavericks (10.9) - Recommended
- Yosemite (10.10)
- El Capitan (10.11)

Drivers

Colorspan: All

HP: HP-DesignJet-H35000, HP-DesignJet-H45000, HP-Scitex-FB910, HP-Scitex-FB950

Océ: OCE CS7070, OCE CS7075

Mutoh: SC-Pro, Ultima and Kona roll cutters are no longer supported with the USB connectivity on Mac OS X 10.9 (Mavericks), 10.10 (Yosemite) and 10.1 (El Capitan).

New drivers

Printers

Many of these drivers have been made available for **Caldera V10.1** after the initial release.

Agfa: JETi-Mira-MG-2716-S, JETi-Mira-MG-2716-HS, JETi-Mira-MG-2732-S, JETi-Mira-MG-2732-HS

AMPLA: Ampla-300dpi

ATPColor: DFP-54-EW, DFP-56-EW, DFP-740-G4, DFP-1000-G4, DFP-1320-G4, DFP-1320-G4P

D-gen: Teleios XL2600 G5, Teleios Black, Teleios Grande G5

Dilli: NEO-Titan-RTR5006D-W2X

DGI: FT 1904X

Durst: Rhotex 180 TR, Rhotex-HS

EFI: H1625 LED, H1625 SD, H3225 LED

Epson: SureColor F9200

Flora: Gjet200, LJ1800T, Tjet1000, Tjet-RG5

Fujifilm: Acuity-LED1600-II

HP: Latex 3100, Latex 3500, Designjet-D5800, Designjet-T7200, Designjet-Z5400, PageWideXL-4000, PageWideXL-500, PageWideXL-800, Latex 110, Scitex-1700

IQDEMY

Inktec: RX320G

MGI: JETvarnish 3D, JETvarnish 3DS

Mimaki: JV150, JV300, CJV150, CJV300

MS-Printing Solutions: MS-JP-2xCMYK, MS-JP3, MS-JP4, MS-JP5evo, MS-JP7

Novus Imaging: Ultra

Océ: ColorWave 500, ColorWave 550, ColorWave 650, ColorWave 650 PP, ColorWave 700, ColorWave 810, ColorWave 900, ColorWave 910

Seiko: ColorPainterH3-104S-8C

SPS: Stratojet-Econo, Stratojet-FB1212, Stratojet-FB2512, Stratojet-Piranha, Stratojet-RTR, Stratojet-SharkII

swissQprint: Impala 2, Impala 2i, Impala i, Oryx 2

Teckwin: TeckGlass, Twinner 2513FB, Twinner 5000R

VUTEK: GS2000lx-UltraDrop, GS3250lxr-Pro, GS5250lxr-Pro, H2000-Pro-101, QS3250r, TX3250r

Cutters

Some of these cutters have been made available for **Caldera V10.1** after the initial release through build updates.

Comagrav

Generic: HPGL

Kongsberg: XPAuto

Mimaki: CJV300, TPC1000

Protek

Summa: SummaFlex

Tekcel: Opticam DXF